

# Recombinant Pig IL23A Full Length Transmembrane protein, His&Myc-tagged

**Cat. No.** IL23A-1327P    **Lot. No.** (See product label)

## SPECIFICATION

<b>Product Overview</b>	Recombinant Pig IL23A protein(Q9N2H9)(23-193aa), fused to N-terminal His tag and C-terminal Myc tag, was expressed in E. coli.
<b>Species</b>	Pig
<b>Source</b>	E.coli
<b>ProteinLength</b>	23-193aa
<b>Form</b>	If the delivery form is liquid, the default storage buffer is Tris/PBS-based buffer, 5%-50% glycerol. If the delivery form is lyophilized powder, the buffer before lyophilization is Tris/PBS-based buffer, 6% Trehalose, pH 8.0.
<b>Molecular Mass</b>	26.1 kDa
<b>AA Sequence</b>	RAVPEGSSPAWAQGQQLSQQQLCTLAWTAHLPMGHVDLPREEGDDETTSEVPHIQC GDGCDPQGLRDNSQSCLQRIHQGLVIFYEKLLGSDIFTGEPSSLHPDGSGVQLHASLL GLRQLLQPEGHHWETEQTSPSPSPQPWQRLLLLRLKILRSLQAFVAVAARVFAHGAA TLSQ
<b>Purity</b>	Greater than 85% as determined by SDS-PAGE.
<b>Storage</b>	Store at -20°C/-80°C upon receipt, aliquoting is necessary for mutiple use. Avoid

 Tel: 1-631-559-9269    1-516-512-3133

 Email: [info@creative-biomart.com](mailto:info@creative-biomart.com)     Fax: 1-631-938-8127

 45-1 Ramsey Road, Shirley, NY 11967, USA

repeated freeze-thaw cycles.

**Reconstitution**

Please reconstitute protein in deionized sterile water to a concentration of 0.1-1.0 mg/mL. We recommend to add 5-50% of glycerol (final concentration) and aliquot for long-term storage at -20°C/-80°C. Our default final concentration of glycerol is 50%.

**GENE INFORMATION**

**Gene Name** IL23A interleukin 23, alpha subunit p19 [ *Sus scrofa* ]

**Official Symbol** IL23A

**Synonyms** IL23A; interleukin 23, alpha subunit p19; interleukin-23 subunit alpha; IL-23-A; IL-23p19; IL-23 subunit alpha; interleukin 23 p19 subunit; interleukin-23 subunit p19; SGRF; il23p19;

**Gene ID** 100155546

**mRNA Refseq** NM\_001130236

**Protein Refseq** NP\_001123708

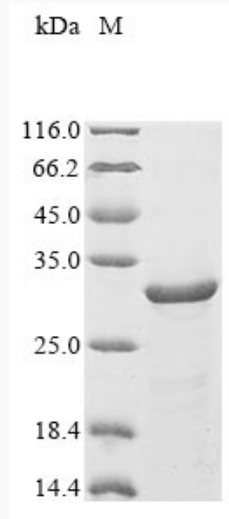
 Tel: 1-631-559-9269 1-516-512-3133

 Email: [info@creative-biomart.com](mailto:info@creative-biomart.com)  Fax: 1-631-938-8127

 45-1 Ramsey Road, Shirley, NY 11967, USA



SDS-PAGE



Tel: 1-631-559-9269 1-516-512-3133

Email: [info@creative-biomart.com](mailto:info@creative-biomart.com) Fax: 1-631-938-8127

45-1 Ramsey Road, Shirley, NY 11967, USA