

Recombinant Human IL23A Protein, His-tagged

Cat. No. IL23A-2303H **Lot. No.** (See product label)

SPECIFICATION

Product Overview	Recombinant Human IL23A Protein (Ile23-Ser328+GSGSSRGGSGSGGGGGSKL+Arg20-Pro189) with a N-His tag was expressed in 293F.
Species	Human
Source	HEK293
ProteinLength	Ile23-Ser328+GSGSSRGGSGSGGGGGSKL+Arg20-Pro189
Description	This gene encodes a subunit of the heterodimeric cytokine interleukin 23 (IL23). IL23 is composed of this protein and the p40 subunit of interleukin 12 (IL12B). The receptor of IL23 is formed by the beta 1 subunit of IL12 (IL12RB1) and an IL23 specific subunit, IL23R. Both IL23 and IL12 can activate the transcription activator STAT4, and stimulate the production of interferon-gamma (IFNG). In contrast to IL12, which acts mainly on naive CD4(+) T cells, IL23 preferentially acts on memory CD4(+) T cells.
Form	Freeze-dried powder
Molecular Mass	Predicted Molecular Mass: 58.5 kDa Accurate Molecular Mass: 60 kDa
Endotoxin	<1.0 EU per 1g (determined by the LAL method).

 Tel: 1-631-559-9269 1-516-512-3133

 Email: info@creative-biomart.com  Fax: 1-631-938-8127

 45-1 Ramsey Road, Shirley, NY 11967, USA

Purity	> 90%
Applications	Positive Control; Immunogen; SDS-PAGE; WB.
Stability	The thermal stability is described by the loss rate. The loss rate was determined by accelerated thermal degradation test, that is, incubate the protein at 37 centigrade for 48h, and no obvious degradation and precipitation were observed. The loss rate is less than 5% within the expiration date under appropriate storage condition.
Storage	Avoid repeated freeze/thaw cycles. Store at 2-8 centigrade for one month. Aliquot and store at -80 centigrade for 12 months.
Storage Buffer	20mM Tris, 150mM NaCl, pH8.0, containing 1mM EDTA, 1mM DTT, 0.01% SKL, 5% Trehalose and Proclin300.
Reconstitution	Reconstitute in 20mM Tris, 150mM NaCl (pH8.0) to a concentration of 0.1-1.0 mg/mL. Do not vortex.

GENE INFORMATION

Gene Name	IL23A interleukin 23 subunit alpha [Homo sapiens (human)]
Official Symbol	IL23A
Synonyms	IL23A; interleukin 23 subunit alpha; P19; SGRF; IL-23; IL-23A; IL23P19; interleukin-23 subunit alpha IL-23 subunit alpha IL-23-A IL-23p19 JKA3 induced upon T-cell activation interleukin 23 p19 subunit

 Tel: 1-631-559-9269 1-516-512-3133

 Email: info@creative-biomart.com  Fax: 1-631-938-8127

 45-1 Ramsey Road, Shirley, NY 11967, USA

interleukin 23, alpha subunit p19
interleukin-23 subunit p19
interleukin-six, G-CSF related factor

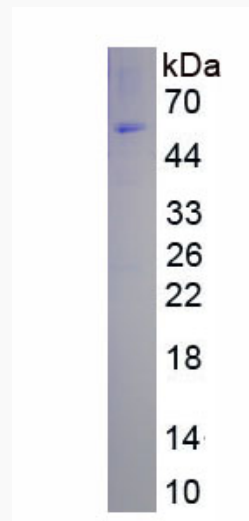
Gene ID 51561

mRNA Refseq NM_016584

Protein Refseq NP_057668

MIM 605580

UniProt ID Q9NPF7



 Tel: 1-631-559-9269 1-516-512-3133

 Email: info@creative-biomart.com  Fax: 1-631-938-8127

 45-1 Ramsey Road, Shirley, NY 11967, USA