

## Recombinant Human IL23A Protein, SUMO-His-tagged

Cat. No. IL23A-3545H Lot. No. (See product label)

### SPECIFICATION

<b>Product Overview</b>	Recombinant Human IL23A Protein(Q9NPF7)(20-189 aa), fused with N-terminal SUMO tag and His tag, was expressed in E.coli.
<b>Species</b>	Human
<b>Source</b>	E.coli
<b>ProteinLength</b>	20-189 aa
<b>Form</b>	PBS, pH7.4, containing 0.01% SKL, 5% Trehalose.
<b>Molecular Mass</b>	32.4kDa
<b>Endotoxin</b>	<1.0EU/g
<b>Purity</b>	> 80%
<b>Storage</b>	Avoid repeated freeze/thaw cycles. Store at -20°C for 12 months. Aliquot and store at -80°C for 12 months.
<b>Reconstitution</b>	Reconstitute in ddH <sub>2</sub> O to a concentration of 0.1-0.2 mg/mL. Do not vortex.

### GENE INFORMATION

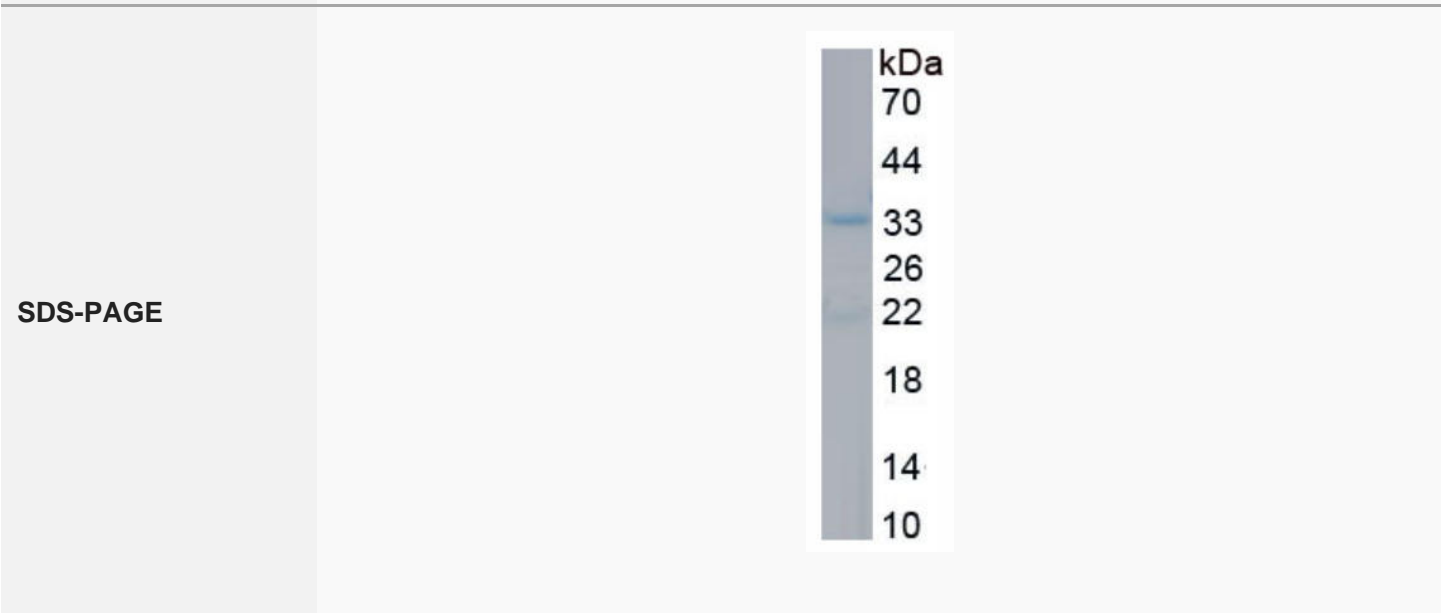
**Gene Name** IL23A interleukin 23, alpha subunit p19 [ Homo sapiens ]

 Tel: 1-631-559-9269 1-516-512-3133

 Email: [info@creative-biomart.com](mailto:info@creative-biomart.com)  Fax: 1-631-938-8127

 45-1 Ramsey Road, Shirley, NY 11967, USA

<b>Official Symbol</b>	IL23A
<b>Synonyms</b>	IL23A; interleukin 23, alpha subunit p19; interleukin-23 subunit alpha; IL 23; IL 23A; IL23P19; interleukin six; G CSF related factor; P19; SGRF; IL-23-A; IL-23p19; IL-23 subunit alpha; interleukin 23 p19 subunit; interleukin-23 subunit p19; JKA3 induced upon T-cell activation; interleukin-six, G-CSF related factor; IL-23; IL-23A; MGC79388;
<b>Gene ID</b>	51561
<b>mRNA Refseq</b>	NM_016584
<b>Protein Refseq</b>	NP_057668
<b>MIM</b>	605580
<b>UniProt ID</b>	Q9NPF7



Tel: 1-631-559-9269 1-516-512-3133

Email: [info@creative-biomart.com](mailto:info@creative-biomart.com) Fax: 1-631-938-8127

45-1 Ramsey Road, Shirley, NY 11967, USA