

Recombinant Human IL23A Protein, MBP&His-tagged

Cat. No. IL23A-4844H **Lot. No.** (See product label)

SPECIFICATION

Product Overview	Recombinant Human IL23A Protein(Q9NPF7)(20-189 aa), fused with N-terminal MBP tag and C-terminal His tag, was expressed in E.coli.
Species	Human
Source	E.coli
ProteinLength	20-189 aa
Form	Phosphate buffered saline.
Molecular Mass	61 kDa
AASequence	RAVPGGSSPAWTQCQQLSQKLCTLAWSAHPLVGHMDLREEGDEETTNDVPHIQCG DGCDPQGLRDNSQFCLQRIHQGLIFYEKLLGSDIFTGEPSELLPDSPVQGQLHASLLGL SQLLQPEGHHWETQQIPSLSPSQPWQRLLLRFKILRSLQAFVAVAARVFAHGAATLS P
Storage	Store it under sterile conditions at -20°C to -80°C. It is recommended that the protein be aliquoted for optimal storage. Avoid repeated freeze-thaw cycles.
Reconstitution	It is recommended that sterile water be added to the vial to prepare a stock solution of 0.2 ug/ul. Centrifuge the vial at 4°C before opening to recover the entire contents.

GENE INFORMATION

 Tel: 1-631-559-9269 1-516-512-3133

 Email: info@creative-biomart.com  Fax: 1-631-938-8127

 45-1 Ramsey Road, Shirley, NY 11967, USA

Gene Name	IL23A interleukin 23, alpha subunit p19 [Homo sapiens]
Official Symbol	IL23A
Synonyms	IL23A; interleukin 23, alpha subunit p19; interleukin-23 subunit alpha; IL 23; IL 23A; IL23P19; interleukin six; G CSF related factor; P19; SGRF; IL-23-A; IL-23p19; IL-23 subunit alpha; interleukin 23 p19 subunit; interleukin-23 subunit p19; JKA3 induced upon T-cell activation; interleukin-six, G-CSF related factor; IL-23; IL-23A; MGC79388;
Gene ID	51561
mRNA Refseq	NM_016584
Protein Refseq	NP_057668
MIM	605580
UniProt ID	Q9NPF7

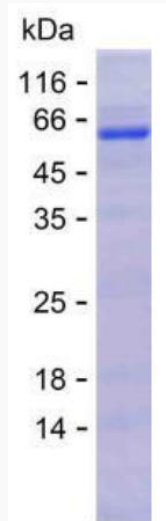
 Tel: 1-631-559-9269 1-516-512-3133

 Email: info@creative-biomart.com  Fax: 1-631-938-8127

 45-1 Ramsey Road, Shirley, NY 11967, USA



SDS-PAGE



Tel: 1-631-559-9269 1-516-512-3133

Email: info@creative-biomart.com Fax: 1-631-938-8127

45-1 Ramsey Road, Shirley, NY 11967, USA