

## Active Recombinant Mouse IL23R protein, His-tagged

Cat. No. IL23R-135M Lot. No. (See product label)

### SPECIFICATION

<b>Product Overview</b>	Recombinant Mouse IL23R protein(Q8K4B4)(Gly24-Gly374), fused with His tag, was expressed in HEK293.
<b>Species</b>	Mouse
<b>Source</b>	HEK293
<b>ProteinLength</b>	Gly24-Gly374
<b>Form</b>	Lyophilized from 0.22 µm filtered solution in PBS, pH7.4.
<b>Bio-activity</b>	IL-23 (mouse):FC (human) (rec.) captured on Protein A chip, can bind Recombinant Mouse IL-23R/His Protein with a KD constant of 1.55E-06 M, determined in a SPR assay.
<b>Molecular Mass</b>	The protein has a calculated MW of 41kDa.The reducing (R) heterodimer protein migrates as 60-100 kDa due to glycosylation
<b>Endotoxin</b>	<1EU/mg
<b>Purity</b>	SDS-PAGE>90%SEC>95%
<b>Storage</b>	Store at -20°C.
<b>Reconstitution</b>	sterile H54O

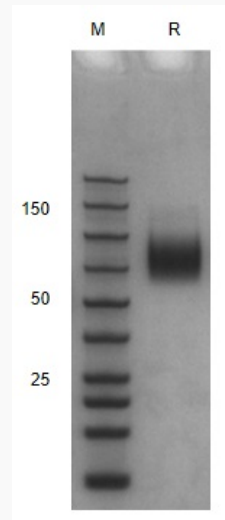
 Tel: 1-631-559-9269 1-516-512-3133

 Email: [info@creative-biomart.com](mailto:info@creative-biomart.com)  Fax: 1-631-938-8127

 45-1 Ramsey Road, Shirley, NY 11967, USA

**GENE INFORMATION**

<b>Gene Name</b>	IL23r interleukin 23 receptor [ <i>Mus musculus</i> ]
<b>Official Symbol</b>	IL23R
<b>Synonyms</b>	IL23R; interleukin 23 receptor; interleukin-23 receptor; IL-23 receptor; IL-23R;
<b>Gene ID</b>	209590
<b>mRNA Refseq</b>	NM_144548
<b>Protein Refseq</b>	NP_653131

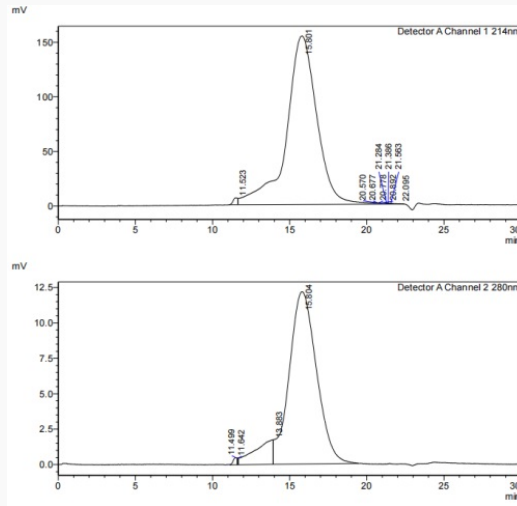
**SDS-PAGE**

 Tel: 1-631-559-9269 1-516-512-3133

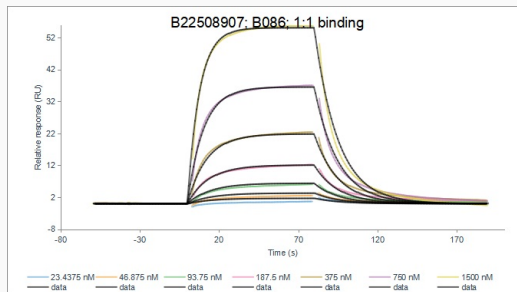
 Email: [info@creative-biomart.com](mailto:info@creative-biomart.com)  Fax: 1-631-938-8127

 45-1 Ramsey Road, Shirley, NY 11967, USA

**SDS-HPLC**



**SPR**



Tel: 1-631-559-9269 1-516-512-3133

Email: [info@creative-biomart.com](mailto:info@creative-biomart.com) Fax: 1-631-938-8127

45-1 Ramsey Road, Shirley, NY 11967, USA