

Recombinant Canine IL23R protein, His-tagged

Cat. No. IL23R-1581C Lot. No. (See product label)

SPECIFICATION

Product Overview	Recombinant Canine IL23R protein(A0A8I3PXL0)(Gly24-Asp354), fused with C-terminal His tag, was expressed in HEK293.
Species	Canine
Source	C-His
ProteinLength	Gly24-Asp354
Tag	C-His
Form	Supplied as 0.22µm filtered solution in PBS (pH 7.4).
Bio-activity	Immobilized Canine IL-23R, His Tag at 5µg/ml (100µl/well) on the plate. Dose response curve for Biotinylated Human IL-23 alpha&IL-12 beta, His Tag with the EC50 of 2.7µg/ml determined by ELISA.
Molecular Mass	The protein has a predicted MW of 39.31 kDa. Due to glycosylation, the protein migrates to 55-70 kDa based on Tris-Bis PAGE result.
Endotoxin	Less than 1EU per µg by the LAL method.
Purity	> 95% as determined by Tris-Bis PAGE; > 95% as determined by HPLC.
Storage	Valid for 12 months from date of receipt when stored at -80°C.;Recommend to aliquot

 Tel: 1-631-559-9269 1-516-512-3133

 Email: info@creative-biomart.com  Fax: 1-631-938-8127

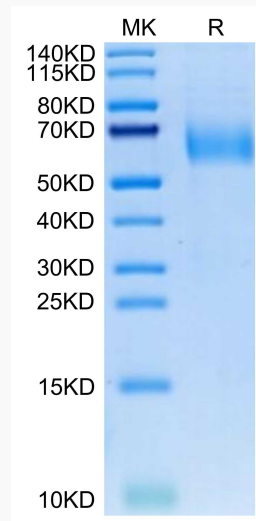
 45-1 Ramsey Road, Shirley, NY 11967, USA

the protein into smaller quantities for optimal storage. Please do not repeated freeze-thaw cycles.

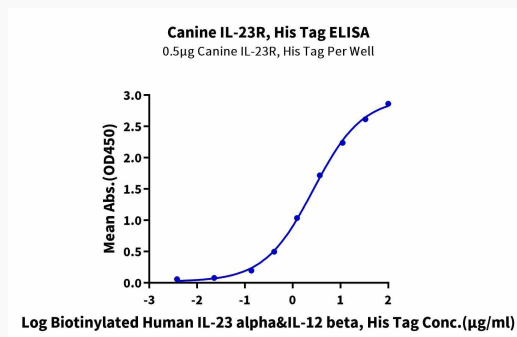
Reconstitution

It is recommended that sterile water be added to the vial to prepare a stock solution of 0.2 ug/ul. Centrifuge the vial at 4°C before opening to recover the entire contents.

Tris-Bis PAGE



ELISA



Tel: 1-631-559-9269 1-516-512-3133

Email: info@creative-biomart.com Fax: 1-631-938-8127

45-1 Ramsey Road, Shirley, NY 11967, USA