

Recombinant Human IL23R protein, His-tagged

Cat. No. IL23R-589H Lot. No. (See product label)

SPECIFICATION

| | |
|-----------------------------|---|
| Product Overview | Recombinant Human IL23R (Gly24-Gly355) protein was fused to His-tag at C-terminus and expressed in human 293 cells (HEK293). |
| Species | Human |
| Source | HEK293 |
| ProteinLength | Gly24-Gly355 |
| Description | Interleukin 23 receptor (IL-23R) is a type I cytokine receptor, and IL-23R pairs with the receptor molecule IL12RB1/IL12Rbeta1, and both are required for IL23A signaling. Also, IL-23R associates constitutively with Janus kinase 2 (JAK2), and binds to transcription activator STAT3 in a ligand-dependent manner. Furthermore, IL-23R mediates T-cells, NK cells and possibly certain macrophage/myeloid cells stimulation probably through activation of the Jak-Stat signaling cascade. As for IL-23, it may be responsible for autoimmune inflammatory diseases and be important for tumorigenesis. |
| Predicted N Terminal | Gly24 |
| Form | Lyophilized from 0.22 µm filtered solution in PBS, pH7.4, 10% trehalose. |
| Molecular Mass | The protein has a calculated MW of 39.9 kDa. The protein migrates as 55-80 kDa under reducing (R) condition (SDS-PAGE) due to glycosylation. |

 Tel: 1-631-559-9269 1-516-512-3133

 Email: info@creative-biomart.com  Fax: 1-631-938-8127

 45-1 Ramsey Road, Shirley, NY 11967, USA

| | |
|-----------------------|---|
| Endotoxin | Less than 1.0 EU per µg by the LAL method. |
| Purity | >90% as determined by SDS-PAGE. |
| Storage | <p>For long term storage, the product should be stored at lyophilized state at -20 centigrade or lower.</p> <p>Please avoid repeated freeze-thaw cycles.</p> <p>This product is stable after storage at:</p> <p>-20 to -70 centigrade for 12 months in lyophilized state; -70 centigrade for 3 months under sterile conditions after reconstitution.</p> |
| Reconstitution | It is recommended that sterile water be added to the vial to prepare a stock solution of 0.2 ug/ul. Centrifuge the vial at 4°C before opening to recover the entire contents. |

GENE INFORMATION

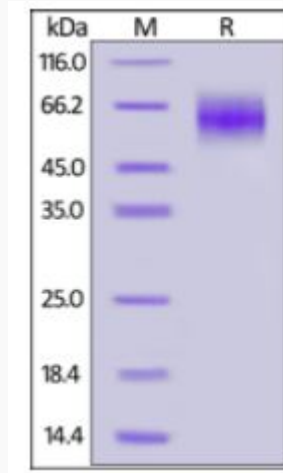
| | |
|------------------------|---|
| Gene Name | IL23R |
| Official Symbol | IL23R |
| Synonyms | IL23R; interleukin 23 receptor; interleukin-23 receptor; IL 23R; IL-23 receptor |
| Gene ID | 149233 |
| mRNA Refseq | NM_144701 |
| Protein Refseq | NP_653302 |
| MIM | 607562 |
| UniProt ID | Q5VWK5 |

 Tel: 1-631-559-9269 1-516-512-3133

 Email: info@creative-biomart.com  Fax: 1-631-938-8127

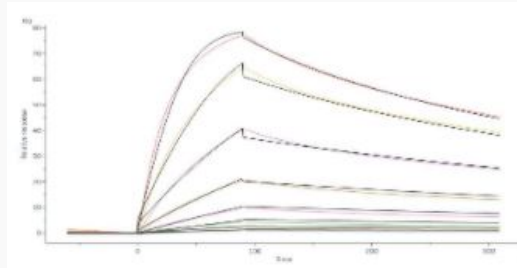
 45-1 Ramsey Road, Shirley, NY 11967, USA

SDS-PAGE of IL23R-589H



Human IL-23 R, His Tag on SDS-PAGE under reducing (R) condition. The gel was stained overnight with Coomassie Blue. The purity of the protein is greater than 90%.

Bioactivity-SPR of IL23R-589H



Biotinylated Human IL-23A&IL-12B Heterodimer Protein, His,Avitag&Tag Free captured on Biotin CAP - Series S sensor Chip can bind Human IL-23 R, His Tag (SPR verified) affinity constant of 3.39 nM as determined in a SPR assay (Biacore 8K) (QC tested).

Tel: 1-631-559-9269 1-516-512-3133

Email: info@creative-biomart.com Fax: 1-631-938-8127

45-1 Ramsey Road, Shirley, NY 11967, USA