

## Recombinant Rat IL23a protein, His-SUMO-tagged

Cat. No. IL23a-3330R Lot. No. (See product label)

### SPECIFICATION

<b>Product Overview</b>	Recombinant Rat IL23a protein(Ala47~Ala196), fused with Two N-terminal Tags, His-tag and SUMO-tag, was expressed in E.coli.
<b>Species</b>	Rat
<b>Source</b>	E.coli
<b>ProteinLength</b>	Ala47~Ala196
<b>Form</b>	PBS, pH7.4, containing 0.01% SKL, 1mM DTT, 5% Trehalose and Proclin300.
<b>Molecular Mass</b>	25kDa
<b>Endotoxin</b>	<1.0EU per 1g (determined by the LAL method)
<b>Purity</b>	> 95%
<b>Storage</b>	Avoid repeated freeze/thaw cycles. Store at 2-8°C for one month. Aliquot and store at -80°C for 12 months.
<b>Reconstitution</b>	Reconstitute in 10mM PBS (pH7.4) to a concentration of 0.1-1.0 mg/mL. Do not vortex.

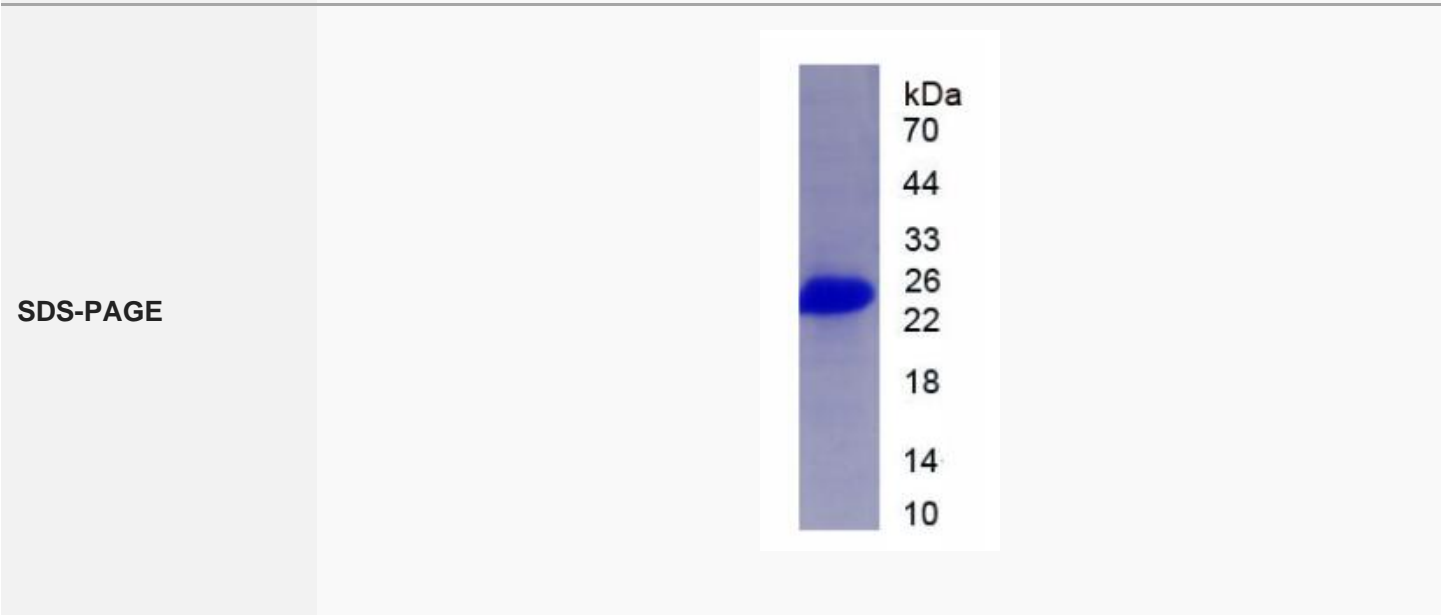
### GENE INFORMATION

 Tel: 1-631-559-9269 1-516-512-3133

 Email: [info@creative-biomart.com](mailto:info@creative-biomart.com)  Fax: 1-631-938-8127

 45-1 Ramsey Road, Shirley, NY 11967, USA

<b>Gene Name</b>	IL23a Interleukin 23, alpha subunit p19 [ Rattus norvegicus ]
<b>Official Symbol</b>	IL23a
<b>Synonyms</b>	IL23A; Interleukin 23, alpha subunit p19; interleukin-23 subunit alpha; IL-23-A; IL-23p19; IL-23 subunit alpha; interleukin-23 subunit p19; MGC114275;
<b>Gene ID</b>	155140
<b>mRNA Refseq</b>	NM_130410
<b>Protein Refseq</b>	NP_569094



Tel: 1-631-559-9269 1-516-512-3133

Email: [info@creative-biomart.com](mailto:info@creative-biomart.com) Fax: 1-631-938-8127

45-1 Ramsey Road, Shirley, NY 11967, USA