

Recombinant Human IL24 Protein (Met1-Leu207), C-His tagged

Cat. No. IL24-3952H Lot. No. (See product label)

SPECIFICATION

Product Overview	Recombinant human IL24 (Met1-Leu207) fused with the C-terminal His tag was expressed in Mammalian cells.
Species	Human
Source	Mammalian Cells
ProteinLength	Met1-Leu207
Form	Lyophilized powder/frozen liquid
Molecular Mass	22.88 kDa
Endotoxin	< 1.0 EU/μg of the protein as determined by the LAL method.
Purity	>90% as determined by SDS-PAGE.
Notes	For research use only.
Storage	Use a manual defrost freezer and avoid repeated freeze thaw cycles. Store at 2 to 8 centigrade for one week. Store at -20 to -80 centigrade for twelve months from the date of receipt.
Storage Buffer	Supplied as solution form in PBS or lyophilized from PBS.

 Tel: 1-631-559-9269 1-516-512-3133

 Email: info@creative-biomart.com  Fax: 1-631-938-8127

 45-1 Ramsey Road, Shirley, NY 11967, USA

Reconstitution Reconstitute in sterile water for a stock solution.

Shipping They are shipped out with dry ice/blue ice unless customers require otherwise.

GENE INFORMATION

Gene Name IL24 interleukin 24 [Homo sapiens (human)]

Official Symbol IL24

Synonyms IL24; interleukin 24; ST16; interleukin-24; C49A; FISP; IL 4 induced secreted protein; IL 24; IL10B; mda 7; melanoma differentiation association protein 7; Mob 5; suppression of tumorigenicity 16 (melanoma differentiation); melanocyte-associated Mda-7; IL-4-induced secreted protein; melanoma differentiation-associated gene 7 protein; MDA7; MOB5;

Gene ID 11009

mRNA Refseq NM_001185156

Protein Refseq NP_001172085

MIM 604136

UniProt ID Q13007

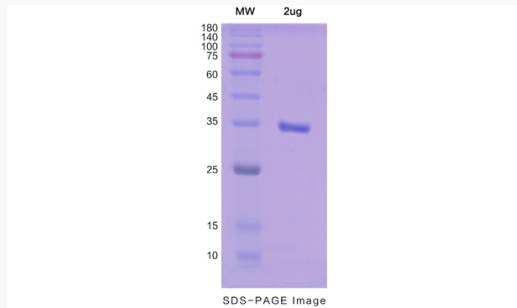
 Tel: 1-631-559-9269 1-516-512-3133

 Email: info@creative-biomart.com  Fax: 1-631-938-8127

 45-1 Ramsey Road, Shirley, NY 11967, USA



SDS-PAGE



Tel: 1-631-559-9269 1-516-512-3133

Email: info@creative-biomart.com Fax: 1-631-938-8127

45-1 Ramsey Road, Shirley, NY 11967, USA