

## Recombinant Human IL25 Protein, His-tagged

Cat. No. IL25-1031H Lot. No. (See product label)

### SPECIFICATION

<b>Product Overview</b>	Recombinant Human IL25 Protein (Tyr33-Gly177) with His tag was expressed in 293F.
<b>Species</b>	Human
<b>Source</b>	HEK293
<b>ProteinLength</b>	Tyr33-Gly177
<b>Description</b>	The protein encoded by this gene is a cytokine that shares sequence similarity with interleukin 17. This cytokine can induce NF-kappaB activation, and stimulate the production of interleukin 8. Both this cytokine and interleukin 17B are ligands for the cytokine receptor IL17BR. Studies of a similar gene in mice suggest that this cytokine may be a pro-inflammatory cytokine favoring the Th2-type immune response. Alternative splicing results in multiple transcript variants.
<b>Form</b>	Freeze-dried powder
<b>Molecular Mass</b>	Predicted Molecular Mass: 18.4 kDa; Accurate Molecular Mass: 17&19&21 kDa
<b>Purity</b>	> 90%
<b>Applications</b>	Positive Control; Immunogen; SDS-PAGE; WB.
<b>Stability</b>	The thermal stability is described by the loss rate. The loss rate was determined by

 Tel: 1-631-559-9269 1-516-512-3133

 Email: [info@creative-biomart.com](mailto:info@creative-biomart.com)  Fax: 1-631-938-8127

 45-1 Ramsey Road, Shirley, NY 11967, USA

accelerated thermal degradation test, that is, incubate the protein at 37 centigrade for 48h, and no obvious degradation and precipitation were observed. The loss rate is less than 5% within the expiration date under appropriate storage condition.

**Storage**

Avoid repeated freeze/thaw cycles. Store at 2-8 centigrade for one month. Aliquot and store at -80 centigrade for 12 months.

**Storage Buffer**

PBS, pH7.4, containing 0.01% SKL, 1mM DTT, 5% Trehalose and Proclin300.

**Reconstitution**

Reconstitute in 10mM PBS (pH7.4) to a concentration of 0.1-1.0 mg/mL. Do not vortex.

## GENE INFORMATION

**Gene Name**

IL25 interleukin 25 [ Homo sapiens (human) ]

**Official Symbol**

IL25

**Synonyms**

IL25; interleukin 25; IL17E, interleukin 17E; interleukin-25; IL 17E; IL 25; interleukin 17E; interleukin-17E; IL17E;

**Gene ID**

64806

**mRNA Refseq**

NM\_022789

**Protein Refseq**

NP\_073626

**MIM**

605658

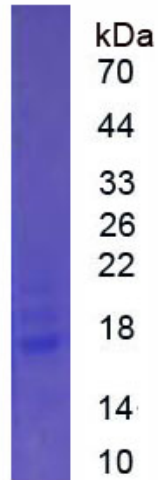
**UniProt ID**

Q9H293

 Tel: 1-631-559-9269 1-516-512-3133

 Email: [info@creative-biomart.com](mailto:info@creative-biomart.com)  Fax: 1-631-938-8127

 45-1 Ramsey Road, Shirley, NY 11967, USA



 Tel: 1-631-559-9269 1-516-512-3133

 Email: [info@creative-biomart.com](mailto:info@creative-biomart.com)  Fax: 1-631-938-8127

 45-1 Ramsey Road, Shirley, NY 11967, USA