

Active Recombinant Human IL25 Protein (Tyr33-Gly177), C-His tagged, Animal-free, Carrier-free

Cat. No. IL25-276H Lot. No. (See product label)

SPECIFICATION

Product Overview	Recombinant Human IL25 Protein (Tyr33-Gly177) with C-His tag was expressed in E. coli and Animal-free as well as Carrier-free.
Species	Human
Source	E.coli
ProteinLength	Tyr33-Gly177
Description	Interleukin 25 (IL-25) is a cytokine with proinflammatory and anti-inflammatory effects, it predicts a molecular mass of 16.7 kDa. It can induce NF- κ B activation, and stimulate the production of IL-8, which is the major chemotactic substance of neutrophils.
Form	Lyophilized
Bio-activity	Measure by its ability to induce IL-8 secretion in human PBMCs. The ED50 for this effect is < 5 ng/mL. Measure by its ability to induce CXCL1 secretion in HT29 cells. The ED50 for this effect is < 1 ng/mL.
Molecular Mass	The protein has a calculated MW of 17.68 kDa. The protein migrates as 19 kDa under reducing condition (SDS-PAGE analysis).

 Tel: 1-631-559-9269 1-516-512-3133

 Email: info@creative-biomart.com  Fax: 1-631-938-8127

 45-1 Ramsey Road, Shirley, NY 11967, USA

Endotoxin	< 0.1 EU/μg of the protein by the LAL method.
Purity	>98% as determined by SDS-PAGE analysis.
Storage	This product is stable after storage at: -20 centigrade for 12 months in lyophilized state from date of receipt. -20 or -80 centigrade for 1 month under sterile conditions after reconstitution. Avoid repeated freeze/thaw cycles.
Storage Buffer	Lyophilized from a 0.2 μm filtered solution of PBS, pH 8.0.
Reconstitution	It is recommended to reconstitute the lyophilized protein in sterile H2O to a concentration not less than 200 μg/mL and incubate the stock solution for at least 20 min to ensure sufficient re-dissolved.
Shipping	The product is shipped with polar packs. Upon receipt, store it immediately at -20 centigrade or lower for long term storage.

GENE INFORMATION

Gene Name	IL25 interleukin 25 [Homo sapiens (human)]
Official Symbol	IL25
Synonyms	IL25; interleukin 25; IL17E, interleukin 17E; interleukin-25; IL 17E; IL 25; interleukin 17E; interleukin-17E; IL17E;
Gene ID	64806
mRNA Refseq	NM_022789

 Tel: 1-631-559-9269 1-516-512-3133

 Email: info@creative-biomart.com  Fax: 1-631-938-8127

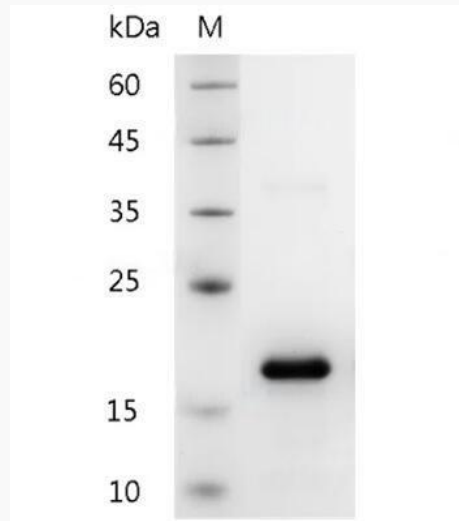
 45-1 Ramsey Road, Shirley, NY 11967, USA

Protein Refseq NP_073626

MIM 605658

UniProt ID Q9H293

**SDS-PAGE analysis
of recombinant
human IL-25.**



 Tel: 1-631-559-9269 1-516-512-3133

 Email: info@creative-biomart.com  Fax: 1-631-938-8127

 45-1 Ramsey Road, Shirley, NY 11967, USA