

## Active Recombinant Rat IL25 Protein

**Cat. No.** IL25-5209R    **Lot. No.** (See product label)

### SPECIFICATION

<b>Product Overview</b>	Rat IL25 recombinant protein expressed in Escherichia coli.
<b>Species</b>	Rat
<b>Source</b>	E.coli
<b>Description</b>	The protein encoded by this gene is a cytokine that shares the sequence similarity with IL17. This cytokine can induce NF-kappaB activation, and stimulate the production of IL8. Both this cytokine and IL17B are ligands for the cytokine receptor IL17BR. Studies of the similar gene in mice suggested that this cytokine may be a proinflammatory cytokine favoring Th2-type immune response. Two alternatively spliced transcript variants of this gene encoding distinct isoforms have been reported. [provided by RefSeq]
<b>Form</b>	Lyophilized
<b>Bio-activity</b>	The activity is determined by the dose-dependent induction of human IL-8 production from human PBMCs. The expected ED50 for this effect is 25-37.5 ng/mL.
<b>Molecular Mass</b>	35.5 kDa
<b>AA Sequence</b>	MCSHLPRCCPSKQQEFPEEWLKWNPAPVSPPEPLRHTHHPESCRASKDGPLNSRA ISPWSYELDRDLNRVPQDLYHARCLCPHCVSLQTGSHMDPMGNSVPLYHNQTVFY RRPCHGEQGAHGRYCLERRLYRVSLACVCVRPRMMA

 Tel: 1-631-559-9269    1-516-512-3133

 Email: [info@creative-biomart.com](mailto:info@creative-biomart.com)     Fax: 1-631-938-8127

 45-1 Ramsey Road, Shirley, NY 11967, USA

<b>Endotoxin</b>	< 0.1 EU/μg
<b>Applications</b>	Functional Study SDS-PAGE
<b>Storage</b>	Store at -20 centigrade on dry atmosphere. After reconstitution with sterilized 20 mM HCl, store at -20 centigrade. Aliquot to avoid repeated freezing and thawing.
<b>Storage Buffer</b>	No additive

## GENE INFORMATION

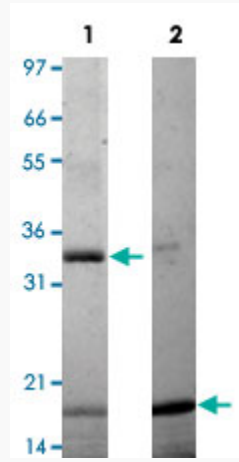
<b>Gene Name</b>	IL25 interleukin 25 [ <i>Rattus norvegicus</i> ]
<b>Official Symbol</b>	IL25
<b>Synonyms</b>	IL25; interleukin 25; interleukin-25; RGD1561632;
<b>Gene ID</b>	501996
<b>mRNA Refseq</b>	NM_001192007
<b>Protein Refseq</b>	NP_001178936

 Tel: 1-631-559-9269 1-516-512-3133

 Email: [info@creative-biomart.com](mailto:info@creative-biomart.com)  Fax: 1-631-938-8127

 45-1 Ramsey Road, Shirley, NY 11967, USA

**Quality Control  
Testing**



1  $\mu$ g/lane in 4-20% Tris-Glycine gel stained with Coomassie Blue

Lane 1: non-reducing conditions

Lane 2: reducing conditions

 Tel: 1-631-559-9269 1-516-512-3133

 Email: [info@creative-biomart.com](mailto:info@creative-biomart.com)  Fax: 1-631-938-8127

 45-1 Ramsey Road, Shirley, NY 11967, USA