

Recombinant Human IL26 Protein (22-171 aa), His-tagged

Cat. No. IL26-2174H Lot. No. (See product label)

SPECIFICATION

Product Overview	Recombinant Human IL26 Protein (22-171 aa) is produced by Yeast expression system. This protein is fused with a 6xHis tag at the N-terminal. Research Area: Immunology. Protein Description: Full Length of Mature Protein.
Species	Human
Source	Yeast
ProteinLength	22-171 aa
Description	May play a role in local mechanisms of mucosal immunity and seems to have a proinflammatory function. May play a role in inflammatory bowel disease. Activates STAT1 and STAT3, MAPK1/3 (ERK1/2), JUN and AKT. Induces expression of SOCS3, TNF-alpha and IL-8, secretion of IL-8 and IL-10 and surface expression of ICAM1. Decreases proliferation of intestinal epithelial cells. Is inhibited by heparin.
Form	Tris-based buffer,50% glycerol
Molecular Mass	19.6 kDa
AA Sequence	KHKQSSFTKSCYPRGTLTSLQAVDALYIKAAWLKATIPEDRIKNIRLLKKKTKKQFMKNC QFQEQLLSFFMEDVFGQLQLQGCKKIRFVEDFHSLRQKLSHCISCASSAREMKSITR MKRIFYRIGNKGIYKAISELDILLSWIKKLLLESSQ
Purity	> 90% as determined by SDS-PAGE.

 Tel: 1-631-559-9269 1-516-512-3133

 Email: info@creative-biomart.com  Fax: 1-631-938-8127

 45-1 Ramsey Road, Shirley, NY 11967, USA

Notes	Repeated freezing and thawing is not recommended. Store working aliquots at 4 centigrade for up to one week.
Storage	The shelf life is related to many factors, storage state, buffer ingredients, storage temperature and the stability of the protein itself. Generally, the shelf life of liquid form is 6 months at -20 centigrade/-80 centigrade. The shelf life of lyophilized form is 12 months at -20 centigrade/-80 centigrade.
Concentration	A hardcopy of COA with reconstitution instruction is sent along with the products.

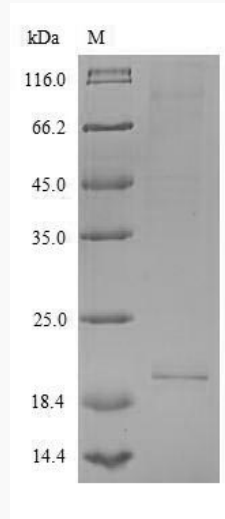
GENE INFORMATION

Gene Name	IL26 interleukin 26 [Homo sapiens]
Official Symbol	IL26
Synonyms	IL26; interleukin 26; interleukin-26; AK155; IL 26; IL-26;
Gene ID	55801
mRNA Refseq	NM_018402
Protein Refseq	NP_060872
MIM	605679
UniProt ID	Q9NPH9

 Tel: 1-631-559-9269 1-516-512-3133

 Email: info@creative-biomart.com  Fax: 1-631-938-8127

 45-1 Ramsey Road, Shirley, NY 11967, USA



(Tris-Glycine gel) Discontinuous SDS-PAGE (reduced) with 5% enrichment gel and 15% separation gel.

 Tel: 1-631-559-9269 1-516-512-3133

 Email: info@creative-biomart.com  Fax: 1-631-938-8127

 45-1 Ramsey Road, Shirley, NY 11967, USA