

Active Recombinant Human IL26 Protein (Lys22-Gln171), C-His tagged, Animal-free, Carrier-free

Cat. No. IL26-252H Lot. No. (See product label)

SPECIFICATION

Product Overview	Recombinant Human IL26 Protein (Lys22-Gln171) with C-His tag was expressed in E. coli and Animal-free as well as Carrier-free.
Species	Human
Source	E.coli
ProteinLength	Lys22-Gln171
Description	Interleukin 26 (IL-26) predicts a molecular mass of 19.8 kDa, is expressed in certain herpesvirus-transformed T cells but not in primary stimulated T cells. T helper 1 cells and Th17 memory CD4+ cells are the major sources of IL-26. More accurately, IL-26 is expressed by pro-inflammatory IL-17 producing T cells in chronically inflamed tissues.
Form	Lyophilized
Bio-activity	Measure by its ability to induce IL-10 secretion in COLO205 cells. The ED50 for this effect is < 150 ng/mL.
Molecular Mass	The protein has a calculated MW of 18.53 kDa. The protein migrates as 18 kDa under reducing condition (SDS-PAGE analysis).
Endotoxin	< 0.1 EU/μg of the protein by the LAL method.

 Tel: 1-631-559-9269 1-516-512-3133

 Email: info@creative-biomart.com  Fax: 1-631-938-8127

 45-1 Ramsey Road, Shirley, NY 11967, USA

Purity	>98% as determined by SDS-PAGE analysis.
Storage	This product is stable after storage at: -20 centigrade for 12 months in lyophilized state from date of receipt. -20 or -80 centigrade for 2 weeks under sterile conditions after reconstitution. Avoid repeated freeze/thaw cycles.
Storage Buffer	Lyophilized from a 0.2 µm filtered solution of PBS, pH 8.0.
Reconstitution	It is recommended to reconstitute the lyophilized protein in sterile H2O to a concentration not less than 200 µg/mL and incubate the stock solution for at least 20 min to ensure sufficient re-dissolved.
Shipping	The product is shipped with polar packs. Upon receipt, store it immediately at -20 centigrade or lower for long term storage.

GENE INFORMATION

Gene Name	IL26 interleukin 26 [Homo sapiens (human)]
Official Symbol	IL26
Synonyms	IL26; interleukin 26; interleukin-26; AK155; IL 26; IL-26;
Gene ID	55801
mRNA Refseq	NM_018402
Protein Refseq	NP_060872
MIM	605679

 Tel: 1-631-559-9269 1-516-512-3133

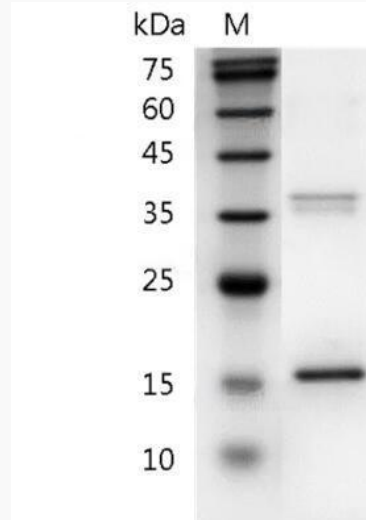
 Email: info@creative-biomart.com  Fax: 1-631-938-8127

 45-1 Ramsey Road, Shirley, NY 11967, USA

UniProt ID

Q9NPH9

SDS-PAGE analysis
of recombinant
human IL-26.



 Tel: 1-631-559-9269 1-516-512-3133

 Email: info@creative-biomart.com  Fax: 1-631-938-8127

 45-1 Ramsey Road, Shirley, NY 11967, USA