

Recombinant Zebrafish IL26 Protein, His-tagged

Cat. No. IL26-61Z Lot. No. (See product label)

SPECIFICATION

Product Overview	Recombinant Zebrafish IL26 Protein, fused to His-tag, was expressed in E. coli.
Species	Zebrafish
Source	E.coli
Description	Is expressed in gill and intestine. Orthologous to human IL26 (interleukin 26).
Form	Supplied as a 0.2 µm filtered solution in PBS, 1 mM DTT (pH8.0).
Molecular Mass	~21 kDa
AA Sequence	MHHHHHMRILIPFTLCALLCWSEGHKQEECLKREIRLPMIREMLSMSQDIHKSLPR DNKPFHRILGKLLKCKELNVPDFKRVLEIYDEHVFEKMWDELPTQFIDYFKRLKGIMQ NCATEGKPTQSR CAKEKLLKFEQTLMKLQPDGKTKALSEFHSVLLWISSGMDRRKT YKKIH
Purity	>90%
Storage	Store it under sterile conditions at -20 to -80 centigrade. It is recommended that the protein be aliquoted for optimal storage. Avoid repeated freeze-thaw cycles.
Concentration	0.15 mg/ml

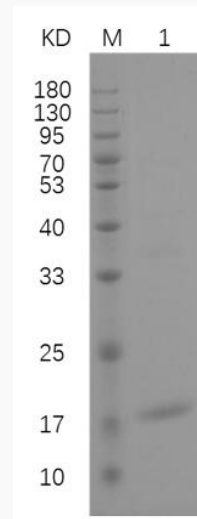
GENE INFORMATION

 Tel: 1-631-559-9269 1-516-512-3133

 Email: info@creative-biomart.com  Fax: 1-631-938-8127

 45-1 Ramsey Road, Shirley, NY 11967, USA

Gene Name	il26 interleukin 26 [<i>Danio rerio</i> (zebrafish)]
Official Symbol	IL26
Synonyms	zgc:194942
Gene ID	553971
mRNA Refseq	NM_001020799
Protein Refseq	NP_001018635
UniProt ID	Q5TLE5

SDS-PAGE

12% reducing SDS-PAGE analysis of purified IL26 (approximately 2 mg protein loaded)

 Tel: 1-631-559-9269 1-516-512-3133

 Email: info@creative-biomart.com  Fax: 1-631-938-8127

 45-1 Ramsey Road, Shirley, NY 11967, USA