

Recombinant Human IL26 protein(22-171aa), MBP&His-Avi-tagged, Biotinylated

Cat. No. IL26-6432H Lot. No. (See product label)

SPECIFICATION

Product Overview	Biotinylated Recombinant Human IL26 protein(Q9NPH9)(22-171aa), fused with N-terminal MBP tag and C-terminal His and Avi tag, was expressed in E.coli.
Species	Human
Source	E.coli
ProteinLength	22-171aa
Conjugation/Label	Biotin
Form	If the delivery form is liquid, the default storage buffer is Tris/PBS-based buffer, 5%-50% glycerol. If the delivery form is lyophilized powder, the buffer before lyophilization is Tris/PBS-based buffer, 6% Trehalose, pH 8.0.
Molecular Mass	65.3 kDa
Purity	Greater than 85% as determined by SDS-PAGE.
Storage	Store at -20°C/-80°C upon receipt, aliquoting is necessary for mutiple use. Avoid repeated freeze-thaw cycles.
Reconstitution	We recommend that this vial be briefly centrifuged prior to opening to bring the contents to the bottom. Please reconstitute protein in deionized sterile water to a

 Tel: 1-631-559-9269 1-516-512-3133

 Email: info@creative-biomart.com  Fax: 1-631-938-8127

 45-1 Ramsey Road, Shirley, NY 11967, USA

concentration of 0.1-1.0 mg/mL. We recommend to add 5-50% of glycerol (final concentration) and aliquot for long-term storage at -20°C/-80°C.

AA Sequence
 KHKQSSFTKSCYPRGTLTSQLVDALYIKAAWLKATIPEDRIKNIRLLKKKTKKQFMKNC
 QFQEQLLSFFMEDVFGQLQLQGCKKIRFVEDFHSLRQKLSHCISCASSAREMKSITR
 MKRIFYRIGNKGIYKAISELDILLSWIKKLESSQ

Conjugation Biotin

GENE INFORMATION

Gene Name [IL26 interleukin 26 \[Homo sapiens \]](#)

Official Symbol [IL26](#)

Synonyms IL26; interleukin 26; interleukin-26; AK155; IL 26; IL-26;

Gene ID [55801](#)

mRNA Refseq [NM_018402](#)

Protein Refseq [NP_060872](#)

MIM [605679](#)

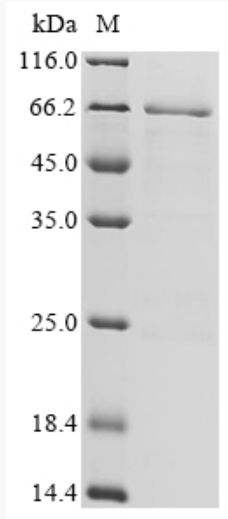
UniProt ID [Q9NPH9](#)


 Tel: 1-631-559-9269 1-516-512-3133

 Email: info@creative-biomart.com  Fax: 1-631-938-8127


 45-1 Ramsey Road, Shirley, NY 11967, USA

SDS-PAGE



 Tel: 1-631-559-9269 1-516-512-3133

 Email: info@creative-biomart.com  Fax: 1-631-938-8127

 45-1 Ramsey Road, Shirley, NY 11967, USA