

Recombinant Human IL27 Protein, His-tagged

Cat. No. IL27-1033H Lot. No. (See product label)

SPECIFICATION

Product Overview	Recombinant Human IL27 Protein (Phe29-Pro243) with His tag was expressed in CHO.
Species	Human
Source	CHO
ProteinLength	Phe29-Pro243
Description	The protein encoded by this gene is one of the subunits of a heterodimeric cytokine complex. This protein is related to interleukin 12A (IL12A). It interacts with Epstein-Barr virus induced gene 3 (EBI3), a protein similar to interleukin 12B (IL12B), and forms a complex that has been shown to drive rapid expansion of naive but not memory CD4(+) T cells. The complex is also found to synergize strongly with interleukin 12 to trigger interferon gamma (IFNG) production of naive CD4(+) T cells. The biological effects of this cytokine are mediated by the class I cytokine receptor (WSX1/TCRR).
Form	Freeze-dried powder
Molecular Mass	Predicted Molecular Mass: 26.2 kDa; Accurate Molecular Mass: 27 kDa
Purity	> 97%
Applications	Positive Control; Immunogen; SDS-PAGE; WB.

 Tel: 1-631-559-9269 1-516-512-3133

 Email: info@creative-biomart.com  Fax: 1-631-938-8127

 45-1 Ramsey Road, Shirley, NY 11967, USA

Stability	The thermal stability is described by the loss rate. The loss rate was determined by accelerated thermal degradation test, that is, incubate the protein at 37 centigrade for 48h, and no obvious degradation and precipitation were observed. The loss rate is less than 5% within the expiration date under appropriate storage condition.
Storage	Avoid repeated freeze/thaw cycles. Store at 2-8 centigrade for one month. Aliquot and store at -80 centigrade for 12 months.
Storage Buffer	PBS, pH7.4, containing 0.01% SKL, 1mM DTT, 5% Trehalose and Proclin300.
Reconstitution	Reconstitute in 10mM PBS (pH7.4) to a concentration of 0.1-1.0 mg/mL. Do not vortex.

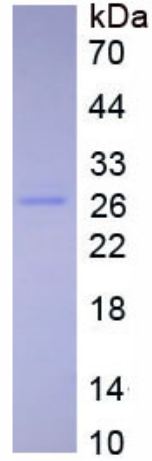
GENE INFORMATION

Gene Name	IL27 interleukin 27 [Homo sapiens (human)]
Official Symbol	IL27
Synonyms	IL27; interleukin 27; p28; IL30; IL-27; IL27A; IL-27A; IL27p28; interleukin-27 subunit alpha; IL-27 p28 subunit; IL-27 subunit alpha; IL-27-A; IL27-A; interleukin-30
Gene ID	246778
mRNA Refseq	NM_145659
Protein Refseq	NP_663634
MIM	608273
UniProt ID	Q8NEV9

 Tel: 1-631-559-9269 1-516-512-3133

 Email: info@creative-biomart.com  Fax: 1-631-938-8127

 45-1 Ramsey Road, Shirley, NY 11967, USA



Tel: 1-631-559-9269 1-516-512-3133

Email: info@creative-biomart.com Fax: 1-631-938-8127

45-1 Ramsey Road, Shirley, NY 11967, USA