

Recombinant Human IL27 Protein (Phe29-Pro243), C-His tagged

Cat. No. IL27-3776H **Lot. No.** (See product label)

SPECIFICATION

Product Overview	Recombinant human IL27 (Phe29-Pro243) fused with the C-terminal His tag was expressed in Mammalian cells.
Species	Human
Source	Mammalian Cells
ProteinLength	Phe29-Pro243
Description	The protein encoded by this gene is one of the subunits of a heterodimeric cytokine complex. This protein is related to interleukin 12A (IL12A) . It interacts with Epstein-Barr virus induced gene 3 (EBI3), a protein similar to interleukin 12B (IL12B), and forms a complex that has been shown to drive rapid expansion of naive but not memory CD4 (+) T cells. The complex is also found to synergize strongly with interleukin 12 to trigger interferon gamma (IFNG) production of naive CD4 (+) T cells. The biological effects of this cytokine are mediated by the class I cytokine receptor (WSX1/TCRR) .
Form	Lyophilized powder/frozen liquid
Molecular Mass	23.76 kDa
Endotoxin	< 1.0 EU/μg of the protein as determined by the LAL method.

 Tel: 1-631-559-9269 1-516-512-3133

 Email: info@creative-biomart.com  Fax: 1-631-938-8127

 45-1 Ramsey Road, Shirley, NY 11967, USA

Purity	>90% as determined by SDS-PAGE.
Notes	For research use only.
Storage	Use a manual defrost freezer and avoid repeated freeze thaw cycles. Store at 2 to 8 centigrade for one week. Store at -20 to -80 centigrade for twelve months from the date of receipt.
Storage Buffer	Supplied as solution form in PBS or lyophilized from PBS.
Reconstitution	Reconstitute in sterile water for a stock solution.
Shipping	They are shipped out with dry ice/blue ice unless customers require otherwise.

GENE INFORMATION

Gene Name	IL27 interleukin 27 [Homo sapiens (human)]
Official Symbol	IL27
Synonyms	interleukin-27 subunit alpha; IL27; interleukin 27; p28; IL30; IL-27; IL27A; IL-27A; IL27p28; IL-27 p28 subunit; IL-27 subunit alpha; IL-27-A; IL27-A; interleukin-30
Gene ID	246778
mRNA Refseq	NM_145659
Protein Refseq	NP_663634
MIM	608273

 Tel: 1-631-559-9269 1-516-512-3133

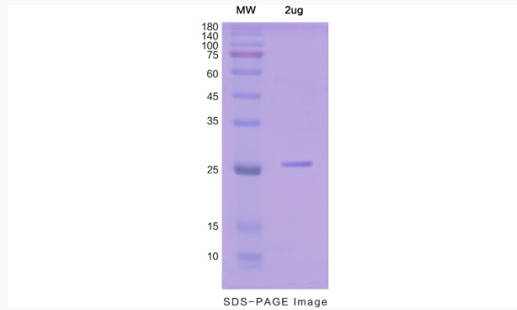
 Email: info@creative-biomart.com  Fax: 1-631-938-8127

 45-1 Ramsey Road, Shirley, NY 11967, USA

UniProt ID

Q8NEV9

SDS-PAGE



 Tel: 1-631-559-9269 1-516-512-3133

 Email: info@creative-biomart.com  Fax: 1-631-938-8127

 45-1 Ramsey Road, Shirley, NY 11967, USA