

Recombinant Human IL27RA Protein, GST-tagged

Cat. No. IL27RA-5203H Lot. No. (See product label)

SPECIFICATION

Product Overview	Human IL27RA partial ORF (NP_004834, 33 a.a. - 132 a.a.) recombinant protein with GST-tag at N-terminal.
Species	Human
Source	Wheat Germ
Description	In mice, CD4+ helper T-cells differentiate into type 1 (Th1) cells, which are critical for cell-mediated immunity, predominantly under the influence of IL12. Also, IL4 influences their differentiation into type 2 (Th2) cells, which are critical for most antibody responses. Mice deficient in these cytokines, their receptors, or associated transcription factors have impaired, but are not absent of, Th1 or Th2 immune responses. This gene encodes a protein which is similar to the mouse T-cell cytokine receptor Tccr at the amino acid level, and is predicted to be a glycosylated transmembrane protein. [provided by RefSeq]
Molecular Mass	36.74 kDa
AA Sequence	QGSAGPLQCYGVGPLGDLNCSWEPLGDLGAPSELHLQSQKYRSNKTQTVAVAAGR SWVAIPREQLTMSDKLLVWGKAGQPLWPPVFNLETQMKNAPR
Applications	Enzyme-linked Immunoabsorbent Assay Western Blot (Recombinant protein) Antibody Production Protein Array

 Tel: 1-631-559-9269 1-516-512-3133

 Email: info@creative-biomart.com  Fax: 1-631-938-8127

 45-1 Ramsey Road, Shirley, NY 11967, USA

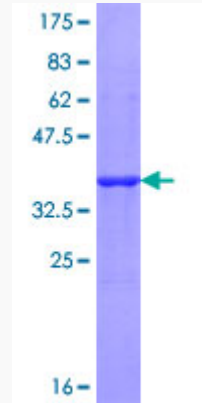
Notes	Best use within three months from the date of receipt of this protein.
Storage	Store at -80 centigrade. Aliquot to avoid repeated freezing and thawing.
Storage Buffer	50 mM Tris-HCl, 10 mM reduced Glutathione, pH=8.0 in the elution buffer.
GENE INFORMATION	
Gene Name	IL27RA interleukin 27 receptor, alpha [Homo sapiens]
Official Symbol	IL27RA
Synonyms	IL27RA; interleukin 27 receptor, alpha; interleukin-27 receptor subunit alpha; CRL1; IL 27R; T cell cytokine receptor type 1; TCCR; WSX 1; WSX1; zcytor1; IL-27RA; IL-27R-alpha; IL-27R subunit alpha; cytokine receptor-like 1; class I cytokine receptor; IL-27 receptor subunit alpha; T-cell cytokine receptor type 1; type I T-cell cytokine receptor; IL27R;
Gene ID	9466
mRNA Refseq	NM_004843
Protein Refseq	NP_004834
MIM	605350
UniProt ID	Q6UWB1

 Tel: 1-631-559-9269 1-516-512-3133

 Email: info@creative-biomart.com  Fax: 1-631-938-8127

 45-1 Ramsey Road, Shirley, NY 11967, USA

**Quality Control
Testing**



12.5% SDS-PAGE Stained with Coomassie Blue

 Tel: 1-631-559-9269 1-516-512-3133

 Email: info@creative-biomart.com  Fax: 1-631-938-8127

 45-1 Ramsey Road, Shirley, NY 11967, USA