

## Recombinant Human IL27RA protein, hFc-tagged

Cat. No. IL27RA-6756H Lot. No. (See product label)

### SPECIFICATION

<b>Product Overview</b>	Recombinant Human IL27RA protein(Q6UWB1)(Gly34-Lys516), fused with C-terminal hFc tag, was expressed in HEK293.
<b>Species</b>	Human
<b>Source</b>	HEK293
<b>ProteinLength</b>	Gly34-Lys516
<b>Tag</b>	C-hFc
<b>Form</b>	Supplied as 0.22µm filtered solution in PBS, 5mM DTT (pH 7.4).
<b>Bio-activity</b>	Immobilized Human IL-27 RA, hFc Tag at 5µg/ml (100µl/well) on the plate. Dose response curve for Human IL-27, His Tag with the EC50 of 55.9ng/ml determined by ELISA.
<b>Molecular Mass</b>	The protein has a predicted MW of 79.3 kDa. Due to glycosylation, the protein migrates to 90-120 kDa based on Tris-Bis PAGE result.
<b>Endotoxin</b>	Less than 1EU per µg by the LAL method.
<b>Purity</b>	> 95% as determined by Tris-Bis PAGE
<b>Storage</b>	Valid for 12 months from date of receipt when stored at -80°C; Recommend to aliquot

 Tel: 1-631-559-9269 1-516-512-3133

 Email: [info@creative-biomart.com](mailto:info@creative-biomart.com)  Fax: 1-631-938-8127

 45-1 Ramsey Road, Shirley, NY 11967, USA

the protein into smaller quantities for optimal storage. Please do not repeated freeze-thaw cycles.

**Reconstitution**

It is recommended that sterile water be added to the vial to prepare a stock solution of 0.2 ug/ul. Centrifuge the vial at 4°C before opening to recover the entire contents.

## GENE INFORMATION

**Gene Name** [IL27RA interleukin 27 receptor, alpha \[ Homo sapiens \]](#)

**Official Symbol** [IL27RA](#)

**Synonyms**

IL27RA; interleukin 27 receptor, alpha; interleukin-27 receptor subunit alpha; CRL1; IL 27R; T cell cytokine receptor type 1; TCCR; WSX 1; WSX1; zcytor1; IL-27RA; IL-27R-alpha; IL-27R subunit alpha; cytokine receptor-like 1; class I cytokine receptor; IL-27 receptor subunit alpha; T-cell cytokine receptor type 1; type I T-cell cytokine receptor; IL27R;

**Gene ID** [9466](#)

**mRNA Refseq** [NM\\_004843](#)

**Protein Refseq** [NP\\_004834](#)

**MIM** [605350](#)

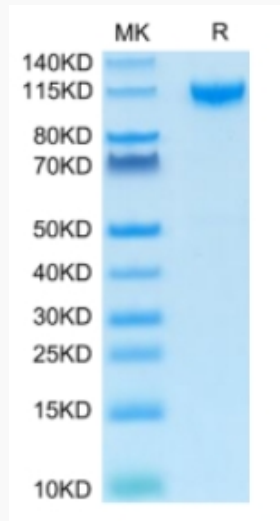
**UniProt ID** [Q6UWB1](#)

 Tel: 1-631-559-9269 1-516-512-3133

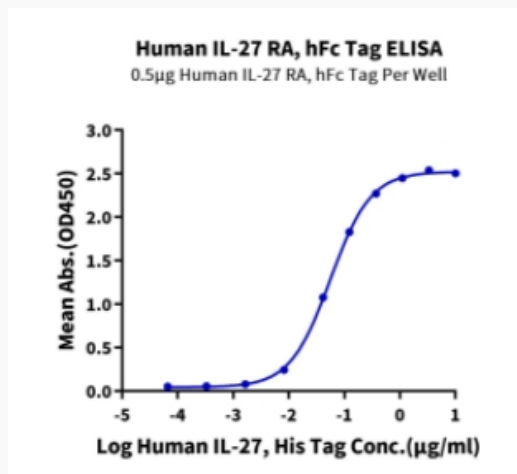
 Email: [info@creative-biomart.com](mailto:info@creative-biomart.com)  Fax: 1-631-938-8127

 45-1 Ramsey Road, Shirley, NY 11967, USA

**Tris-Bis PAGE**



**ELISA Data**



 Tel: 1-631-559-9269 1-516-512-3133

 Email: [info@creative-biomart.com](mailto:info@creative-biomart.com)  Fax: 1-631-938-8127

 45-1 Ramsey Road, Shirley, NY 11967, USA