

Recombinant Full Length Human IL27RA Protein, C-Flag-tagged

Cat. No. IL27RA-876HFL **Lot. No.** (See product label)

SPECIFICATION

Product Overview	Recombinant Full Length Human IL27RA Protein, fused to Flag-tag at C-terminus, was expressed in Mammalian cells.
Species	Human
Source	Mammalian Cells
Description	In mice, CD4 ⁺ helper T-cells differentiate into type 1 (Th1) cells, which are critical for cell-mediated immunity, predominantly under the influence of IL12. Also, IL4 influences their differentiation into type 2 (Th2) cells, which are critical for most antibody responses. Mice deficient in these cytokines, their receptors, or associated transcription factors have impaired, but are not absent of, Th1 or Th2 immune responses. This gene encodes a protein which is similar to the mouse T-cell cytokine receptor Tccr at the amino acid level, and is predicted to be a glycosylated transmembrane protein.
Form	25 mM Tris HCl, pH 7.3, 100 mM glycine, 10% glycerol.
Molecular Mass	69.3 kDa
AA Sequence	MRGGRGAPFWLWPLPKLALLPLLWVLFQRTRPQGSAGPLQCYGVGPLGLDNC SW EPLGDLGAPSELHLQ SQKYRSNKTQTVAVAAGRSWVAIPREQLTMSDKLLVWG TK AGQPLWPPVFNLETQMKNAPRLGPDVD FSEDDPLEATVHWAPPTWPSHKV LIC QFHYYRCQEAAWTLLEPELKTIPVVEIQDLELATGYKVYGR CRMEKEEDLWGEW

 Tel: 1-631-559-9269 1-516-512-3133

 Email: info@creative-biomart.com  Fax: 1-631-938-8127

 45-1 Ramsey Road, Shirley, NY 11967, USA

SPILSFQTPPSAPKDVWVSGNLCGTPGGEEPLLLWKAPGPCVQVSYKVVFWVGGRR
 E LSPEGITCCCSLIPSGAEWARVSAVNATSWEPLTNLSLVCLDSASAPRSVAVSSIA
 GSTELLVTWQPGP GEPLHVVDWARDGDPLEKLNWVRLPPGNLSALLPGNFTVGV
 PYRITVTAVSASGLASASSVWGFREEL APLVGP TLWRLQDAPPGTPAIAWGEVPRH
 QLRGHLTHYTLCAQSGTSPSVC MNVSGNTQSVTLPLDPWG PCELWVTASTIAGQG
 PPGPILRLHLPDNTLRWKVLP GILFLWGLFLLGCGLSLATSGRCYHLRHKVLPR WV
 WEKVPDPANSSSGQPHMEQVPEAQPLGDLPILEVEEMEPPPMESSQPAQATAPL
 DSGYEKHF LPTP
 EELG LLGPPRPQVLASGPT RTRPLEQKLISEEDLAANDILDYKDDDDKV

Purity > 80% as determined by SDS-PAGE and Coomassie blue staining.

Stability Stable for 12 months from the date of receipt of the product under proper storage and handling conditions. Avoid repeated freeze-thaw cycles.

Storage Store at -80 centigrade.

Concentration >50 ug/mL as determined by microplate BCA method.

Preparation Recombinant protein was captured through anti-DDK affinity column followed by conventional chromatography steps.

Protein Families Druggable Genome, Transmembrane

Full Length Full L.

GENE INFORMATION

Gene Name [IL27RA interleukin 27 receptor subunit alpha \[Homo sapiens \(human\) \]](#)

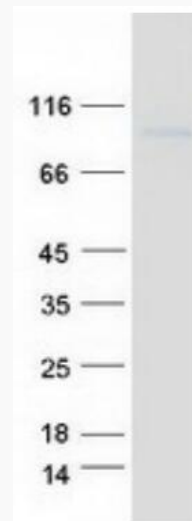
Official Symbol [IL27RA](#)

 Tel: 1-631-559-9269 1-516-512-3133

 Email: info@creative-biomart.com  Fax: 1-631-938-8127

 45-1 Ramsey Road, Shirley, NY 11967, USA

Synonyms	CRL1; TCCR; WSX1; IL27R; IL-27RA; zcytor1
Gene ID	9466
mRNA Refseq	NM_004843.4
Protein Refseq	NP_004834.1
MIM	605350
UniProt ID	Q6UWB1



Coomassie blue staining of purified IL27RA protein.

 Tel: 1-631-559-9269 1-516-512-3133

 Email: info@creative-biomart.com  Fax: 1-631-938-8127

 45-1 Ramsey Road, Shirley, NY 11967, USA