

Active Recombinant Human IL28A protein

Cat. No. IL28A-136H Lot. No. (See product label)

SPECIFICATION

Product Overview	Recombinant Human IL28A was expressed in E. coli.
Species	Human
Source	E.coli
Form	Lyophilized from a 0.2 µm filtered solution in PBS
Bio-activity	The ED50 is 10.0-50.0 ng/mL as determined by an anti-viral assay (using human hepatocellular carcinoma cells infected with EMC virus)
Molecular Mass	19.5 kDa
Endotoxin	<1.0 EU/µg of recombinant protein as determined by the LAL method.
Purity	>95%
Applications	Cell Assay
Storage	The lyophilized protein is stable for at least one year from date of receipt at -70 centigrade. Upon reconstitution, this cytokine can be stored in working aliquots at 2 centigrade - 8 centigrade for one month, or at -20 centigrade for six months, with a carrier protein without detectable loss of activity. Avoid repeated freeze/thaw cycles.
Reconstitution	Reconstitute in sterile PBS at 100 µg/mL (containing at least 0.1% human or bovine

 Tel: 1-631-559-9269 1-516-512-3133

 Email: info@creative-biomart.com  Fax: 1-631-938-8127

 45-1 Ramsey Road, Shirley, NY 11967, USA

serum albumin)

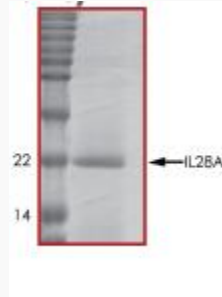
GENE INFORMATION

Gene Name	IL28A interleukin 28A (interferon, lambda 2) [Homo sapiens]
Official Symbol	IL28A
Synonyms	IL28A; interleukin 28A (interferon, lambda 2); interleukin 28A; interleukin-28A; IFNL2; IL 28A; IFN-lambda-2; cytokine Zcyto20; interferon lambda 2; interferon lambda-2; interferon-lambda 2; IL-28A;
Gene ID	282616
mRNA Refseq	NM_172138
Protein Refseq	NP_742150
MIM	607401
UniProt ID	Q8IZJ0
Chromosome Location	19q13.13
Pathway	Cytokine-cytokine receptor interaction, organism-specific biosystem; Cytokine-cytokine receptor interaction, conserved biosystem; Jak-STAT signaling pathway, organism-specific biosystem; Jak-STAT signaling pathway, conserved biosystem;
Function	cytokine activity;

 Tel: 1-631-559-9269 1-516-512-3133

 Email: info@creative-biomart.com  Fax: 1-631-938-8127

 45-1 Ramsey Road, Shirley, NY 11967, USA



Tel: 1-631-559-9269 1-516-512-3133

Email: info@creative-biomart.com Fax: 1-631-938-8127

45-1 Ramsey Road, Shirley, NY 11967, USA