

Recombinant Human IL28B Protein, His-tagged

Cat. No. IL28B-2308H **Lot. No.** (See product label)

SPECIFICATION

Product Overview	Recombinant Human IL28B Protein (Val22-Val196) with a N-His tag was expressed in E. coli.
Species	Human
Source	E.coli
ProteinLength	Val22-Val196
Description	This gene encodes a cytokine distantly related to type I interferons and the IL-10 family. This gene, interleukin 28A (IL28A), and interleukin 29 (IL29) are three closely related cytokine genes that form a cytokine gene cluster on a chromosomal region mapped to 19q13. Expression of the cytokines encoded by the three genes can be induced by viral infection. All three cytokines have been shown to interact with a heterodimeric class II cytokine receptor that consists of interleukin 10 receptor, beta (IL10RB) and interleukin 28 receptor, alpha (IL28RA).
Form	Freeze-dried powder
Molecular Mass	Predicted Molecular Mass: 21.6 kDa Accurate Molecular Mass: 22 kDa
Endotoxin	<1.0 EU per 1g (determined by the LAL method).
Purity	> 95%

 Tel: 1-631-559-9269 1-516-512-3133

 Email: info@creative-biomart.com  Fax: 1-631-938-8127

 45-1 Ramsey Road, Shirley, NY 11967, USA

Applications	Cell culture; Activity Assays.
Stability	The thermal stability is described by the loss rate. The loss rate was determined by accelerated thermal degradation test, that is, incubate the protein at 37 centigrade for 48h, and no obvious degradation and precipitation were observed. The loss rate is less than 5% within the expiration date under appropriate storage condition.
Storage	Avoid repeated freeze/thaw cycles. Store at 2-8 centigrade for one month. Aliquot and store at -80 centigrade for 12 months.
Storage Buffer	20mM Tris, 150mM NaCl, pH8.0, containing 1mM EDTA, 1mM DTT, 0.01% SKL, 5% Trehalose and Proclin300.
Reconstitution	Reconstitute in 20mM Tris, 150mM NaCl (PH8.0) to a concentration of 0.1-1.0 mg/mL. Do not vortex.

GENE INFORMATION

Gene Name	IL28B interleukin 28B (interferon, lambda 3) [Homo sapiens (human)]
Official Symbol	IL28B
Synonyms	IL28B; interleukin 28B (interferon, lambda 3); interleukin 28B; interleukin-28B; IFNL3; IL 28B; IL28C; IL-28C; IFN-lambda-3; IFN-lambda-4; interleukin 28C; interleukin-28C; cytokine Zcyto22; interferon lambda-3; interferon lambda-4; interferon, lambda 3; interferon, lambda 4; IL-28B;
Gene ID	282617
mRNA Refseq	NM_172139

 Tel: 1-631-559-9269 1-516-512-3133

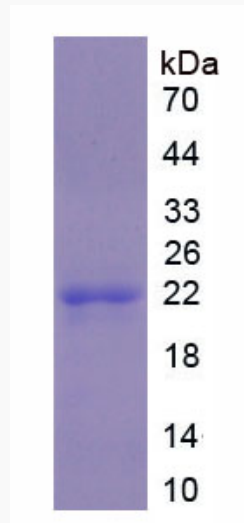
 Email: info@creative-biomart.com  Fax: 1-631-938-8127

 45-1 Ramsey Road, Shirley, NY 11967, USA

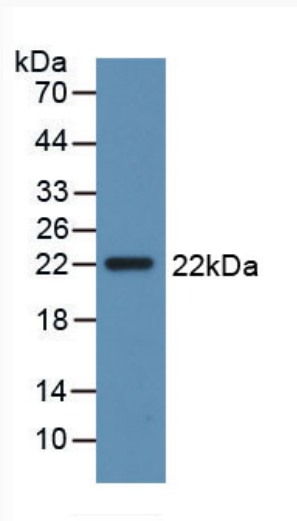
Protein Refseq NP_742151

MIM 607402

UniProt ID Q8IZI9



WB

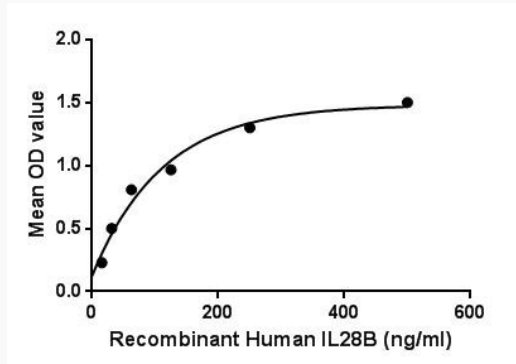


 Tel: 1-631-559-9269 1-516-512-3133


 Email: info@creative-biomart.com  Fax: 1-631-938-8127

 45-1 Ramsey Road, Shirley, NY 11967, USA

Bioactivity



Binding activity

 Tel: 1-631-559-9269 1-516-512-3133

 Email: info@creative-biomart.com  Fax: 1-631-938-8127

 45-1 Ramsey Road, Shirley, NY 11967, USA