

Recombinant Mouse IL28B protein

Cat. No. IL28B-65M Lot. No. (See product label)

SPECIFICATION

Product Overview Recombinant Mouse IL28B protein was expressed in Escherichia coli.

Species Mouse

Source E.coli

ProteinLength 174

Description This gene encodes a cytokine distantly related to type I interferons and the IL-10 family. This gene, interleukin 28A (IL28A), and interleukin 29 (IL29) are three closely related cytokine genes that form a cytokine gene cluster on a chromosomal region mapped to 19q13. Expression of the cytokines encoded by the three genes can be induced by viral infection. All three cytokines have been shown to interact with a heterodimeric class II cytokine receptor that consists of interleukin 10 receptor, beta (IL10RB) and interleukin 28 receptor, alpha (IL28RA).

Form Lyophilized from a 0.2µm filtered concentrated solution in PBS, pH 7.4.

Bio-activity Fully biologically active when compared to standard. The ED50 as determined by an anti-viral assay using human HepG2 cells infected with encephalomyocarditis is less than 30 ng/ml, corresponding to a specific activity of $> 3.3 \times 10^4$ IU/mg.

Molecular Mass Approximately 19.6 kDa, a single non-glycosylated polypeptide chain containing 174 amino acids.

 Tel: 1-631-559-9269 1-516-512-3133

 Email: info@creative-biomart.com  Fax: 1-631-938-8127

 45-1 Ramsey Road, Shirley, NY 11967, USA

AA Sequence	DPVPRATRLPVEAKDCHIAQFKSLSPKELQAFKKAKGAIEKRLLKDMRCCSSHLISRA WDLKQLQVQERP KALQAEVALTLKVWENINDSALTTILGQPLHTLSHIHSQLQTCTQL QATAEPKPPSRRLSRWLHRLQEAQSKETPGCLEDSVTSNLFQLLLRLDKCVASGDQ CV
Endotoxin	Less than 1 EU/g of rMuIFN-λ3/IL-28B as determined by LAL method.
Purity	>98% by SDS-PAGE and HPLC analysis.
Storage	Use a manual defrost freezer and avoid repeated freeze-thaw cycles. 12 months from date of receipt, -20 to -70 centigrade as supplied. 1 month, 2 to 8 centigrade under sterile conditions after reconstitution. 3 months, -20 to -70 centigrade under sterile conditions after reconstitution.
Reconstitution	We recommend that this vial be briefly centrifuged prior to opening to bring the contents to the bottom. Reconstitute in sterile distilled water or aqueous buffer containing 0.1 % BSA to a concentration of 0.1-1.0 mg/mL. Stock solutions should be apportioned into working aliquots and stored at ≤-20 centigrade. Further dilutions should be made in appropriate buffered solutions.

GENE INFORMATION

Gene Name	IL28B
Official Symbol	IL28B
Synonyms	IL28B; interleukin 28B; interleukin-28B; IFN-lambda-3; interleukin 28; interferon alpha; interferon lambda-3; IL28; IFL-1; IL-28B; INF-alpha; INF-lambda;
Gene ID	338374

 Tel: 1-631-559-9269 1-516-512-3133

 Email: info@creative-biomart.com  Fax: 1-631-938-8127

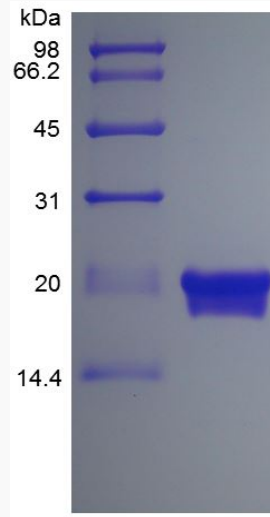
 45-1 Ramsey Road, Shirley, NY 11967, USA

mRNA Refseq [NM_177396](#)

Protein Refseq [NP_796370](#)

UniProt ID [Q8CGK6](#)

SDS-PAGE of IL28B-
65M



 Tel: 1-631-559-9269 1-516-512-3133

 Email: info@creative-biomart.com  Fax: 1-631-938-8127

 45-1 Ramsey Road, Shirley, NY 11967, USA