

Recombinant Human IL28RA Protein, GST-tagged

Cat. No. IL28RA-5201H Lot. No. (See product label)

SPECIFICATION

Product Overview	Human IL28RA partial ORF (NP_734464, 51 a.a. - 150 a.a.) recombinant protein with GST-tag at N-terminal.
Species	Human
Source	Wheat Germ
Description	<p>The protein encoded by this gene belongs to the class II cytokine receptor family. This protein forms a receptor complex with interleukine 10 receptor, beta (IL10RB). The receptor complex has been shown to interact with three closely related cytokines, including interleukin 28A (IL28A), interleukin 28B (IL28B), and interleukin 29 (IL29). The expression of all three cytokines can be induced by viral infection. The cells overexpressing this protein have been found to have enhanced responses to IL28A and IL29, but decreased response to IL28B. Three alternatively spliced transcript variants encoding distinct isoforms have been reported. [provided by RefSeq</p>
Molecular Mass	36.74 kDa
AA Sequence	QDVTYFVAYQSSPTRRRWREVEECAGTKELLCSMMCLKKQDLYNKFKGRVRTVSP SSKSPWVESEYLDYLFVEVPAPPVLVLTQTTEEILSANATYQLPPC
Applications	<p>Enzyme-linked Immunoabsorbent Assay Western Blot (Recombinant protein) Antibody Production Protein Array</p>

 Tel: 1-631-559-9269 1-516-512-3133

 Email: info@creative-biomart.com  Fax: 1-631-938-8127

 45-1 Ramsey Road, Shirley, NY 11967, USA

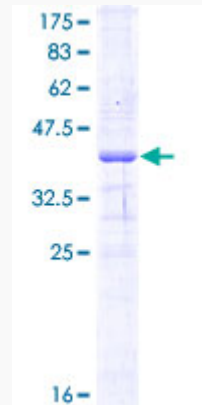
Notes	Best use within three months from the date of receipt of this protein.
Storage	Store at -80 centigrade. Aliquot to avoid repeated freezing and thawing.
Storage Buffer	50 mM Tris-HCl, 10 mM reduced Glutathione, pH=8.0 in the elution buffer.
GENE INFORMATION	
Gene Name	IL28RA interleukin 28 receptor, alpha (interferon, lambda receptor) [Homo sapiens]
Official Symbol	IL28RA
Synonyms	IL28RA; interleukin 28 receptor, alpha (interferon, lambda receptor); interleukin 28 receptor, alpha; interleukin-28 receptor subunit alpha; CRF2/12; IFNLR; IL 28R1; interferon lambda receptor 1; CRF2-12; IL-28RA; IL-28R-alpha; IFN-lambda-R1; IFN-lambda receptor 1; interleukin 28 receptor A; IL-28 receptor subunit alpha; interferon lambda, receptor 1; interleukin 28 alpha receptor; class II cytokine receptor CRF2/12; interleukin or cytokine receptor 2; cytokine receptor class-II member 12; cytokine receptor family 2 member 12; likely interleukin or cytokine receptor 2; LICR2; IFNLR1; IL-28R1;
Gene ID	163702
mRNA Refseq	NM_170743
Protein Refseq	NP_734464
MIM	607404
UniProt ID	Q8IU57

 Tel: 1-631-559-9269 1-516-512-3133

 Email: info@creative-biomart.com  Fax: 1-631-938-8127

 45-1 Ramsey Road, Shirley, NY 11967, USA

**Quality Control
Testing**



12.5% SDS-PAGE Stained with Coomassie Blue

 Tel: 1-631-559-9269 1-516-512-3133

 Email: info@creative-biomart.com  Fax: 1-631-938-8127

 45-1 Ramsey Road, Shirley, NY 11967, USA