

Recombinant Human IL2RA protein, hlgG-His-tagged

Cat. No. IL2RA-01H Lot. No. (See product label)

SPECIFICATION

Product Overview Recombinant Human IL2RA protein, fused to hlgG-His-tag, was expressed in E. coli.

Species Human

Source Insect Cells

ProteinLength 22-240aa

Description

The interleukin 2 (IL2) receptor alpha (IL2RA) and beta (IL2RB) chains, together with the common gamma chain (IL2RG), constitute the high-affinity IL2 receptor. Homodimeric alpha chains (IL2RA) result in low-affinity receptor, while homodimeric beta (IL2RB) chains produce a medium-affinity receptor. Normally an integral-membrane protein, soluble IL2RA has been isolated and determined to result from extracellular proteolysis. Alternately-spliced IL2RA mRNAs have been isolated, but the significance of each is presently unknown. Mutations in this gene are associated with interleukin 2 receptor alpha deficiency. Patients with severe Coronavirus Disease 2019 (COVID-19), the disease caused by the novel severe acute respiratory syndrome coronavirus 2 (SARS-CoV-2), have significantly elevated levels of IL2R in their plasma. Similarly, serum IL-2R levels are found to be elevated in patients with different types of carcinomas. Certain IL2RA and IL2RB gene polymorphisms have been associated with lung cancer risk.

Form Liquid in. Phosphate-Buffered Saline (pH 7.4) containing 10% glycerol.

Molecular Mass 52.1 kDa

 Tel: 1-631-559-9269 1-516-512-3133

 Email: info@creative-biomart.com  Fax: 1-631-938-8127

 45-1 Ramsey Road, Shirley, NY 11967, USA

AA Sequence

ADPELCDDDP PEIPHATFKA MAYKEGTM LN CECKRGFRRI KSGSLYMLCT
 GNSSHSSWDN QCQCTSSATR NTTKQVTPQP EEQKERKTTE MQSPMQPVDQ
 ASLPGHCREP PPWENEATER IYHFVVGQMV YYQCVQGYRA LHRGPAESVC
 KMT HGKTRWT QPQLICTGEM ETSQFPGEEK PQASPEGRPE SETSCLVTTT
 DFQIQTEMAA TMETSIFTTE YQLEPKSCDK THTCP PCPAP ELLGGPSVFL
 FPPKPKDTLM ISRTPEVTCV VVDVSHEDPE VKFNWYVDGV EVHNAKTKPR
 EEQYNSTYRV VSVLTVLHQD WLNGKEYKCK VSNKALPAPI EKTISKAKGQ
 PREPQVY TLP PSRDELTKNQ VSLTCLVKGF YPSDIAVEWE SNGQPENNYK
 TTPPVLDSDG SFFLYSKLTV DKSRWQQGNV FSCSV MHEAL HNHYTQKSL S
 LSPGKHHHHH H

Endotoxin

< 1 EU per 1ug of protein (determined by LAL method).

Purity

> 90%

Applications

SDS-PAGE

Storage

Can be stored at 2 centigrade to 8 centigrade for 1 week. For long term storage, aliquot and store at -20 centigrade to -80 centigrade. Avoid repeated freezing and thawing cycles.

Concentration

0.5 mg/ml

GENE INFORMATION

Gene Name

IL2RA interleukin 2 receptor subunit alpha [Homo sapiens (human)]

Official Symbol


IL2RA

Synonyms

Interleukin-2 receptor subunit alpha isoform 1; IL2RA; CD25; IDDM10; IL2R; IMD41; p55; TCGFR

 Tel: 1-631-559-9269 1-516-512-3133

 Email: info@creative-biomart.com  Fax: 1-631-938-8127

 45-1 Ramsey Road, Shirley, NY 11967, USA

Gene ID 3559

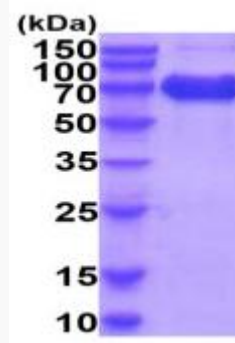
mRNA Refseq NM_000417

Protein Refseq NP_000408

MIM 147730

UniProt ID P01589

15% SDS-PAGE
(3ug)



3ug by SDS-PAGE under reducing condition and visualized by coomassie blue stain.

 Tel: 1-631-559-9269 1-516-512-3133

 Email: info@creative-biomart.com  Fax: 1-631-938-8127

 45-1 Ramsey Road, Shirley, NY 11967, USA