

## Recombinant Human IL2RA protein, His-Avi-tagged

Cat. No. IL2RA-025H Lot. No. (See product label)

### SPECIFICATION

<b>Product Overview</b>	Recombinant Human CD25/IL-2R Protein is expressed from mammalian with a Poly-His and Avi Tag at the C-terminal. It contains Glu22-Cys213.
<b>Species</b>	Human
<b>Source</b>	HEK293
<b>ProteinLength</b>	It contains Glu22-Cys213 .
<b>Description</b>	Human IL-2 receptor alpha (IL-2 R alpha ), also known as Tac antigen and as CD25, was initially identified as a 55 kDa membrane glycoprotein that is capable of binding IL-2.eceptor for interleukin-2. The receptor is involved in the regulation of immune tolerance by controlling regulatory T cells (TREGs) activity. TREGs suppress the activation and expansion of autoreactive T-cells.
<b>Form</b>	Supplied as 0.22um filtered solution in PBS (pH 7.4).
<b>Molecular Mass</b>	The Protein has a predicted MW of 24.6kDa. As a result of glycosylation, the protein migrates as 40-50 kDa under reducing (R) condition (Bis-Tris PAGE).
<b>Endotoxin</b>	Less than 0.05 EU per ug by the LAL method.
<b>Purity</b>	> 95% as determined by Bis-Tris PAGE; > 95% as determined by HPLC
<b>Storage</b>	The product should be stored at -70°C. Please do not repeated freeze-thaw cycles.

 Tel: 1-631-559-9269 1-516-512-3133

 Email: [info@creative-biomart.com](mailto:info@creative-biomart.com)  Fax: 1-631-938-8127

 45-1 Ramsey Road, Shirley, NY 11967, USA

**Reconstitution** It is recommended that sterile water be added to the vial to prepare a stock solution of 0.2 ug/ul. Centrifuge the vial at 4°C before opening to recover the entire contents.

## GENE INFORMATION

**Gene Name** [IL2RA interleukin 2 receptor, alpha \[ Homo sapiens \]](#)

**Official Symbol** [IL2RA](#)

**Synonyms** CD25 antigen; CD25; IDDM10; IL-2 R alpha; IL-2 receptor subunit alpha; IL2R alpha; IL-2R subunit alpha; IL2R; IL2RA; IL-2Ra; IL-2-RA; IL2-RA; interleukin 2 receptor, alpha; interleukin-2 receptor subunit alpha; p55; TAC antigen; TCGFR

**Gene ID** [3559](#)

**mRNA Refseq** [NM\\_000417](#)

**Protein Refseq** [NP\\_000408](#)

**MIM** [147730](#)

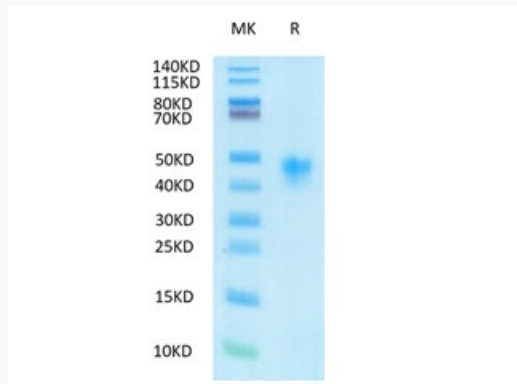
**UniProt ID** [P01589](#)

 Tel: 1-631-559-9269 1-516-512-3133

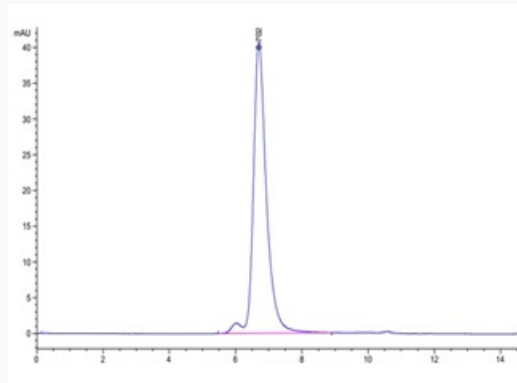
 Email: [info@creative-biomart.com](mailto:info@creative-biomart.com)  Fax: 1-631-938-8127

 45-1 Ramsey Road, Shirley, NY 11967, USA

**Tris-Bis PAGE**



**HPLC data**

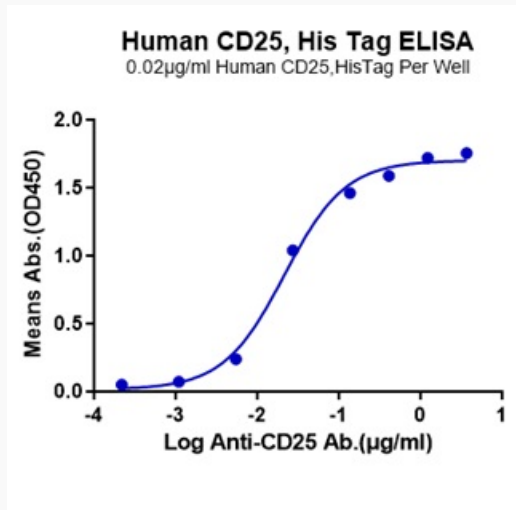


 Tel: 1-631-559-9269 1-516-512-3133

 Email: [info@creative-biomart.com](mailto:info@creative-biomart.com)  Fax: 1-631-938-8127

 45-1 Ramsey Road, Shirley, NY 11967, USA

ELISA data



 Tel: 1-631-559-9269 1-516-512-3133

 Email: [info@creative-biomart.com](mailto:info@creative-biomart.com)  Fax: 1-631-938-8127

 45-1 Ramsey Road, Shirley, NY 11967, USA