

Recombinant Human IL2RA protein, His-Avi-tagged, Biotinylated

Cat. No. IL2RA-1633H **Lot. No.** (See product label)

SPECIFICATION

Product Overview	Biotinylated Recombinant Human IL2RA protein(P01589)(Glu22-Cys213), fused with C-terminal His and Avi tag, was expressed in HEK293.
Species	Human
Source	HEK293
ProteinLength	Glu22-Cys213
Tag	C-His-Avi
Conjugation/Label	Biotin
Form	Lyophilized from 0.22µm filtered solution in PBS (pH 7.4). Normally 5% trehalose is added as protectant before lyophilization.
Bio-activity	Immobilized Anti-CD25 Antibody, hFc Tag at 0.2µg/ml (100µl/well) on the plate. Dose response curve for Biotinylated Human IL-2 R alpha, His Tag with the EC50 of 11.9ng/ml determined by ELISA.
Molecular Mass	The protein has a predicted MW of 24.6 kDa. Due to glycosylation, the protein migrates to 40-50 kDa based on Tris-Bis PAGE result.
Endotoxin	Less than 1EU per µg by the LAL method.

 Tel: 1-631-559-9269 1-516-512-3133

 Email: info@creative-biomart.com  Fax: 1-631-938-8127

 45-1 Ramsey Road, Shirley, NY 11967, USA

Purity	> 95% as determined by Tris-Bis PAGE; > 95% as determined by HPLC
Storage	Reconstituted protein stable at -80°C for 12 months, 4°C for 1 week. Use a manual defrost freezer and avoid repeated freeze-thaw cycles.
Reconstitution	Centrifuge tubes before opening. Reconstituting to a concentration more than 100 µg/ml is recommended. Dissolve the lyophilized protein in distilled water.
Conjugation	Biotin

GENE INFORMATION

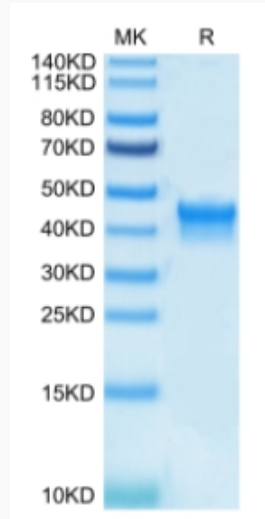
Gene Name	IL2RA interleukin 2 receptor, alpha [Homo sapiens]
Official Symbol	IL2RA
Synonyms	IL2RA; interleukin 2 receptor, alpha; IL2R; interleukin-2 receptor subunit alpha; CD25; p55; IL2-RA; IL-2-RA; TAC antigen; IL-2R subunit alpha; IL-2 receptor subunit alpha; TCGFR; IDDM10;
Gene ID	3559
mRNA Refseq	NM_000417
Protein Refseq	NP_000408
MIM	147730
UniProt ID	P01589

 Tel: 1-631-559-9269 1-516-512-3133

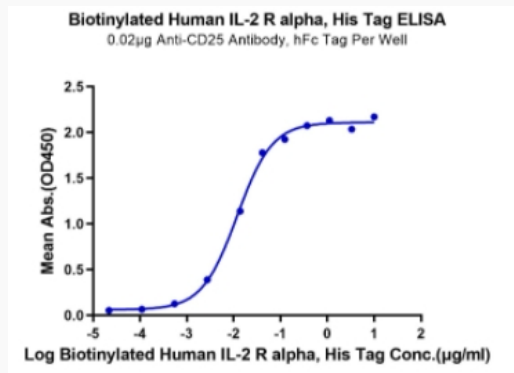
 Email: info@creative-biomart.com  Fax: 1-631-938-8127

 45-1 Ramsey Road, Shirley, NY 11967, USA

Tris-Bis PAGE



ELISA Data



 Tel: 1-631-559-9269 1-516-512-3133

 Email: info@creative-biomart.com  Fax: 1-631-938-8127

 45-1 Ramsey Road, Shirley, NY 11967, USA