

Recombinant Human IL2RA protein, Fc-tagged

Cat. No. IL2RA-170H Lot. No. (See product label)

SPECIFICATION

Product Overview	Recombinant Human IL2RA (Glu22-Cys213) protein was fused to human IgG1 Fc tag at C-terminus and expressed in human 293 cells (HEK293).
Species	Human
Source	HEK293
ProteinLength	Glu22-Cys213
Description	<p>Interleukin-2 receptor subunit alpha (IL2RA) is also known as IL-2R subunit alpha, IL-2-RA, IL2-RA, TAC antigen, p55, CD antigen CD25, is a type I transmembrane glycoprotein. IL2RA is expressed on activated T cells and regulatory T cells, and is capable of binding IL2 with low affinity by itself. However, a ligand-induced high affinity heterotrimeric receptor complex is produced when IL2RA is associated non-covalently with the IL2 receptor beta and gamma chain, and subsequently initiates the intracellular signal pathways such as MAPK or JAK/STAT. On dendritic cells (DC), CD25 has been previously regarded as an activation marker, while both murine and human DC can express CD25, they do not express the beta-chain of the IL-2 receptor, which is indispensable for the execution of IL-2 signaling.</p>
Predicted N Terminal	Glu22
Form	Lyophilized from 0.22 µm filtered solution in Tris with Glycine, Arginine and NaCl, pH7.5, 10% trehalose.

 Tel: 1-631-559-9269 1-516-512-3133

 Email: info@creative-biomart.com  Fax: 1-631-938-8127

 45-1 Ramsey Road, Shirley, NY 11967, USA

Molecular Mass	The protein has a calculated MW of 48.4 kDa. The protein migrates as 60-66 kDa under reducing (R) condition (SDS-PAGE) due to glycosylation.
Endotoxin	Less than 1.0 EU per µg by the LAL method.
Purity	>95% as determined by SDS-PAGE.
Storage	For long term storage, the product should be stored at lyophilized state at -20 centigrade or lower. Please avoid repeated freeze-thaw cycles. This product is stable after storage at: -20 to -70 centigrade for 12 months in lyophilized state; -70 centigrade for 3 months under sterile conditions after reconstitution.
Reconstitution	It is recommended that sterile water be added to the vial to prepare a stock solution of 0.2 ug/ul. Centrifuge the vial at 4°C before opening to recover the entire contents.

GENE INFORMATION

Gene Name	IL2RA
Official Symbol	IL2RA
Synonyms	IL2RA; interleukin 2 receptor, alpha; IL2R; interleukin-2 receptor subunit alpha; CD25; p55; IL2-RA; IL-2-RA; TAC antigen; IL-2R subunit alpha; IL-2 receptor subunit alpha; TCGFR; IDDM10
Gene ID	3559
mRNA Refseq	NM_000417

 Tel: 1-631-559-9269 1-516-512-3133

 Email: info@creative-biomart.com  Fax: 1-631-938-8127

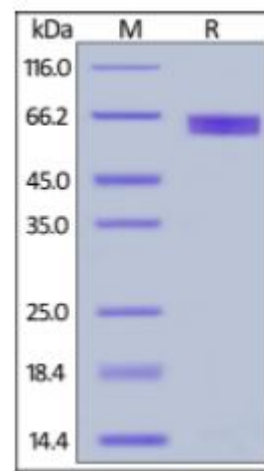
 45-1 Ramsey Road, Shirley, NY 11967, USA

Protein Refseq NP_000408

MIM 147730

UniProt ID P01589

SDS-PAGE of IL2RA-
170H



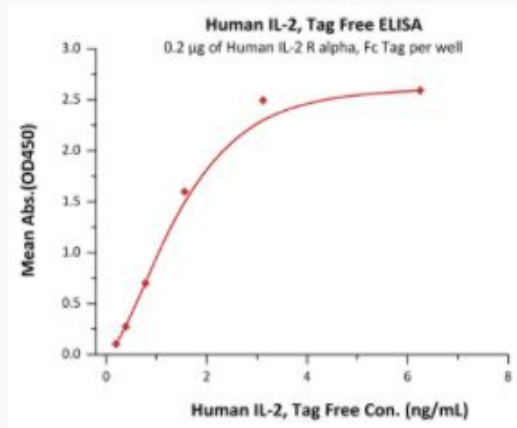
Human IL-2 R alpha, Fc Tag on SDS-PAGE under reducing (R) condition. The gel was stained overnight with Coomassie Blue. The purity of the protein is greater than 95%.

Tel: 1-631-559-9269 1-516-512-3133

Email: info@creative-biomart.com Fax: 1-631-938-8127

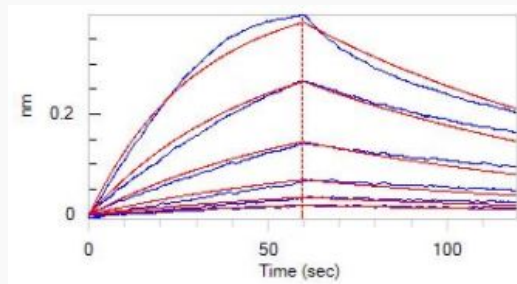
45-1 Ramsey Road, Shirley, NY 11967, USA

**Bioactivity-ELISA of
IL2RA-170H**



Immobilized Human IL-2 R alpha, Fc Tag at 2µg/mL (100 µL/well) can bind Human IL-2, Tag Free with a linear range of 0.2-1.56 ng/mL (QC tested).

Bioactivity-BLI



Loaded Human IL-2 R alpha, Fc Tag on Protein A Biosensor, can bind Human IL-2, Tag Free with an affinity constant of 43.2 nM as determined in BLI assay (ForteBio Octet Red96e) (Routinely tested).

Tel: 1-631-559-9269 1-516-512-3133

Email: info@creative-biomart.com Fax: 1-631-938-8127

45-1 Ramsey Road, Shirley, NY 11967, USA