

## Recombinant Cattle IL2RA protein, His & T7-tagged

Cat. No. IL2RA-1864C Lot. No. (See product label)

### SPECIFICATION

<b>Product Overview</b>	Recombinant Cattle IL2RA aa. (Glu22~Gln243 (Accession # P12342)) fused with N-terminal His & T7 tag was produced in E. coli cells.
<b>Species</b>	Cattle
<b>Source</b>	E.coli
<b>ProteinLength</b>	Glu22~Gln243
<b>Form</b>	Freeze-dried powder
<b>Molecular Mass</b>	37kDa as determined by SDS-PAGE reducing conditions.
<b>Endotoxin</b>	<1.0EU per 1ug (determined by the LAL method)
<b>Purity</b>	>95%
<b>Characteristic</b>	The isoelectric point is 6.1.
<b>Applications</b>	SDS-PAGE; WB; ELISA; IP.
<b>Stability</b>	The thermal stability is described by the loss rate of the target protein. The loss rate was determined by accelerated thermal degradation test, that is, incubate the protein at 37°C for 48h, and no obvious degradation and precipitation were observed. (Referring from China Biological Products Standard, which was calculated by the

 Tel: 1-631-559-9269 1-516-512-3133

 Email: [info@creative-biomart.com](mailto:info@creative-biomart.com)  Fax: 1-631-938-8127

 45-1 Ramsey Road, Shirley, NY 11967, USA

Arrhenius equation.) The loss of this protein is less than 5% within the expiration date under appropriate storage condition.

**Storage**

Avoid repeated freeze/thaw cycles. Store at 2-8°C for one month. Aliquot and store at -80°C for 12 months.

**Storage Buffer**

Supplied as lyophilized form in PBS, pH7.4, containing 5% trehalose, 0.01% sarcosyl.

**Reconstitution**

Reconstitute in sterile ddH<sub>2</sub>O.

## GENE INFORMATION

**Gene Name**

IL2RA interleukin 2 receptor subunit alpha [ *Bos taurus* (cattle) ]

**Official Symbol**

IL2RA

**Synonyms**

Cyp1a1; cytochrome P450, family 1, subfamily a, polypeptide 1; AHH; AHRR; CP11; CYP1; Cyp45c; P1-450; P450-C; P450DX; Cypc45c; P-450MC; cytochrome P450 1A1; CYP1A1; P450MT2; P450form6; aryl hydrocarbon hydroxylase; cytochrome P1-450; cytochrome P450 subfamily I (aromatic compound-inducible) member A1 (C6 form c) (C6 form c); cytochrome P450, 1a1; cytochrome P450, subfamily I (aromatic compound-inducible), member A1 (C6, form c) (C6, form c); cytochrome P450-C; cytochrome P450MT2; dioxin-inducible; flavoprotein-linked monooxygenase; microsomal monooxygenase; xenobiotic monooxygenase

**Gene ID**

281861

**mRNA Refseq**

NM\_174358.2

**Protein Refseq**

NP\_776783.1

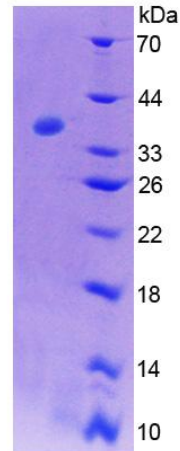
 Tel: 1-631-559-9269 1-516-512-3133

 Email: [info@creative-biomart.com](mailto:info@creative-biomart.com)  Fax: 1-631-938-8127

 45-1 Ramsey Road, Shirley, NY 11967, USA


UniProt ID

P12342




15% SDS-PAGE

SDS-PAGE

 Tel: 1-631-559-9269 1-516-512-3133

 Email: [info@creative-biomart.com](mailto:info@creative-biomart.com)  Fax: 1-631-938-8127

 45-1 Ramsey Road, Shirley, NY 11967, USA