

Recombinant Pig IL2RA protein, His & T7-tagged

Cat. No. IL2RA-1866P Lot. No. (See product label)

SPECIFICATION

Product Overview	Recombinant Pig IL2RA aa. (Gly22~Gln245 (Accession # O02733)) fused with N-terminal His & T7 tag was produced in E. coli cells.
Species	Pig
Source	E.coli
ProteinLength	Gly22~Gln245
Form	Freeze-dried powder
Molecular Mass	Predicted Molecular Mass: 29.1kDa.
Endotoxin	<1.0EU per 1ug (determined by the LAL method)
Purity	>95%
Characteristic	The isoelectric point is 9.2.
Applications	SDS-PAGE; WB; ELISA; IP.
Stability	The thermal stability is described by the loss rate of the target protein. The loss rate was determined by accelerated thermal degradation test, that is, incubate the protein at 37°C for 48h, and no obvious degradation and precipitation were observed. (Referring from China Biological Products Standard, which was calculated by the

 Tel: 1-631-559-9269 1-516-512-3133

 Email: info@creative-biomart.com  Fax: 1-631-938-8127

 45-1 Ramsey Road, Shirley, NY 11967, USA

Arrhenius equation.) The loss of this protein is less than 5% within the expiration date under appropriate storage condition.

Storage

Avoid repeated freeze/thaw cycles. Store at 2-8°C for one month. Aliquot and store at -80°C for 12 months.

Storage Buffer

Supplied as lyophilized form in PBS, pH7.4, containing 5% trehalose, 0.01% sarcosyl.

Reconstitution

Reconstitute in sterile PBS, pH7.2-pH7.4.

GENE INFORMATION

Gene Name

IL2RA interleukin 2 receptor subunit alpha [*Sus scrofa* (pig)]

Official Symbol

IL2RA

Synonyms

POR; cytochrome p450 oxidoreductase; CPR; CYPOR; P450R; NADPH--cytochrome P450 reductase; NADPH-dependent cytochrome P450 reductase; P450 (cytochrome) oxidoreductase

Gene ID

396814

mRNA Refseq

NM_213835.1

Protein Refseq

NP_999000.1

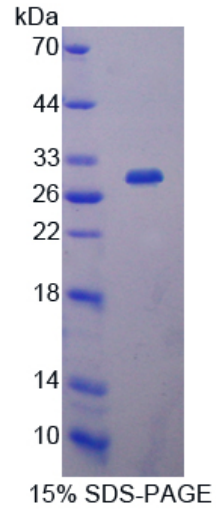
UniProt ID

O02733

 Tel: 1-631-559-9269 1-516-512-3133

 Email: info@creative-biomart.com  Fax: 1-631-938-8127

 45-1 Ramsey Road, Shirley, NY 11967, USA



SDS-PAGE

 Tel: 1-631-559-9269 1-516-512-3133

 Email: info@creative-biomart.com  Fax: 1-631-938-8127

 45-1 Ramsey Road, Shirley, NY 11967, USA