

Recombinant Human IL2RA Protein (ECD), His-tagged(C-ter)

Cat. No. IL2RA-186H Lot. No. (See product label)

SPECIFICATION

Product Overview	Recombinant Human IL2RA Protein (ECD) with His tag (C-ter) was expressed in HEK293.
Species	Human
Source	HEK293
ProteinLength	Glu22-Cys213
Description	<p>The interleukin 2 (IL2) receptor alpha (IL2RA) and beta (IL2RB) chains, together with the common gamma chain (IL2RG), constitute the high-affinity IL2 receptor. Homodimeric alpha chains (IL2RA) result in low-affinity receptor, while homodimeric beta (IL2RB) chains produce a medium-affinity receptor. Normally an integral-membrane protein, soluble IL2RA has been isolated and determined to result from extracellular proteolysis. Alternately-spliced IL2RA mRNAs have been isolated, but the significance of each is presently unknown. Mutations in this gene are associated with interleukin 2 receptor alpha deficiency. [provided by RefSeq, Nov 2009]</p>
Form	Powder
Endotoxin	Endotoxin level is less than 0.1 EU/μg of the protein, as determined by the LAL test.
Purity	> 97% (by SDS-PAGE)
Applications	Binding, SDS-PAGE

 Tel: 1-631-559-9269 1-516-512-3133

 Email: info@creative-biomart.com  Fax: 1-631-938-8127

 45-1 Ramsey Road, Shirley, NY 11967, USA

Notes	For laboratory research only, not for drug, diagnostic or other use.
Storage	Lyophilized protein should be stored at -20°C or -80°C. After reconstitution, aliquot and store at -20°C for up to one month, at 2-8°C for up to one week. Storage in frost free freezers is not recommended. Avoid repeated freeze/thaw cycles. Suggest spin the vial prior to opening.
Storage Buffer	PBS (pH 7.4)
Reconstitution	Reconstitute to a concentration of 0.1-0.5 mg/ml in sterile distilled water.

GENE INFORMATION

Gene Name	IL2RA interleukin 2 receptor, alpha [Homo sapiens]
Official Symbol	IL2RA
Synonyms	IL2RA; interleukin 2 receptor, alpha; IL2R; interleukin-2 receptor subunit alpha; CD25; p55; IL2-RA; IL-2-RA; TAC antigen; IL-2R subunit alpha; IL-2 receptor subunit alpha; TCGFR; IDDM10;
Gene ID	3559
mRNA Refseq	NM_000417
Protein Refseq	NP_000408
MIM	147730
UniProt ID	P01589

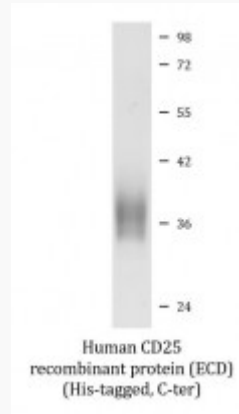
 Tel: 1-631-559-9269 1-516-512-3133

 Email: info@creative-biomart.com  Fax: 1-631-938-8127

 45-1 Ramsey Road, Shirley, NY 11967, USA



SDS-PAGE



Tel: 1-631-559-9269 1-516-512-3133

Email: info@creative-biomart.com Fax: 1-631-938-8127

45-1 Ramsey Road, Shirley, NY 11967, USA