

## Recombinant Human IL2RA Protein, His\Avi-tagged

Cat. No. IL2RA-216H Lot. No. (See product label)

### SPECIFICATION

**Product Overview** Biotinylated recombinant Human Interleukin-2 Receptor subunit alpha is produced by our Mammalian expression system and the target gene encoding Glu22-Gln240 is expressed with an Avi and 6His tag at the C-terminus.

**Species** Human

**Source** HEK293

**ProteinLength** 22-240 a.a.

**Description** Interleukin-2 receptor subunit alpha (IL2RA) is a single-pass type I membrane glycoprotein, contains 2 Sushi (CCP/SCR) domains. IL2RA is expressed on activated T cells and regulatory T cells, and can bind IL2 with low affinity by itself. The interleukin 2 (IL2) receptor alpha (IL2RA) and beta (IL2RB) chains, together with the common gamma chain (IL2RG), constitute the high-affinity IL2 receptor. While homodimeric alpha chains (IL2RA) result in low-affinity receptor, homodimeric beta (IL2RB) chains produce a medium-affinity receptor. CD25 has been previously regarded as an activation marker on dendritic cells. Although both murine and human dendritic cells can express CD25, they do not express the beta-chain of the IL-2 receptor, which is indispensable for the execution of IL-2 signaling.

**Form** Supplied as a 0.2 um filtered solution of PBS, pH7.4.

**Molecular Mass** Predicted Molecular Weight: 30.4kDa  
Apparent Molecular Weight: 35-66.2kDa.

 Tel: 1-631-559-9269 1-516-512-3133

 Email: [info@creative-biomart.com](mailto:info@creative-biomart.com)  Fax: 1-631-938-8127

 45-1 Ramsey Road, Shirley, NY 11967, USA

<b>AA Sequence</b>	Glu22-Gln240
<b>Endotoxin</b>	Less than 0.1 EU/ug.
<b>Purity</b>	>95%
<b>Storage</b>	Store at ≤-70 centigrade, stable for 6 months after receipt. Store at ≤-70 centigrade, stable for 3 months under sterile conditions after opening. Please minimize freeze-thaw cycles.
<b>Quality Statement</b>	Purity: greater than 95% as determined by reducing SDS-PAGE
<b>Shipping</b>	The product is shipped on dry ice pack. Upon receipt, store it immediately at the temperature listed below.

## GENE INFORMATION

<b>Gene Name</b>	IL2RA interleukin 2 receptor subunit alpha [ Homo sapiens (human) ]
<b>Official Symbol</b>	IL2RA
<b>Synonyms</b>	Interleukin-2 receptor subunit alpha; CD25; p55; TAC antigen; IL2-RA; IL-2R subunit alpha; IL-2-RA; IL-2 receptor subunit alpha; IL2R; IMD41; TCGFR; IDDM10
<b>Gene ID</b>	3559
<b>mRNA Refseq</b>	NM_000417.3
<b>Protein Refseq</b>	NP_000408.1
<b>MIM</b>	147730

 Tel: 1-631-559-9269 1-516-512-3133

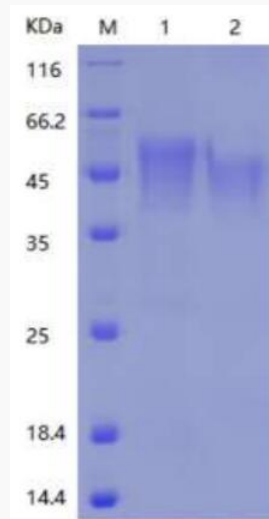
 Email: [info@creative-biomart.com](mailto:info@creative-biomart.com)  Fax: 1-631-938-8127

 45-1 Ramsey Road, Shirley, NY 11967, USA

UniProt ID

P01589

SDS-PAGE



 Tel: 1-631-559-9269 1-516-512-3133

 Email: [info@creative-biomart.com](mailto:info@creative-biomart.com)  Fax: 1-631-938-8127

 45-1 Ramsey Road, Shirley, NY 11967, USA