

Recombinant Human IL2RA Protein

Cat. No. IL2RA-5197H Lot. No. (See product label)

SPECIFICATION

Product Overview	Human IL2RA (NP_000408.1, 223 a.a. - 798 a.a.) partial recombinant protein expressed in Escherichia coli.
Species	Human
Source	E.coli
ProteinLength	233-798 a.a.
Description	The interleukin 2 (IL2) receptor alpha (IL2RA) and beta (IL2RB) chains, together with the common gamma chain (IL2RG), constitute the high-affinity IL2 receptor. Homodimeric alpha chains (IL2RA) result in low-affinity receptor, while homodimeric beta (IL2RB) chains produce a medium-affinity receptor. Normally an integral-membrane protein, soluble IL2RA has been isolated and determined to result from extracellular proteolysis. Alternately-spliced IL2RA mRNAs have been isolated, but the significance of each is presently unknown. [provided by RefSeq]
Form	Liquid
Purity	> 95% by SDS-PAGE
Applications	SDS-PAGE
Storage	Store at -20 centigrade. For long term storage store at -80 centigrade. Aliquot to avoid repeated freezing and thawing.

 Tel: 1-631-559-9269 1-516-512-3133

 Email: info@creative-biomart.com  Fax: 1-631-938-8127

 45-1 Ramsey Road, Shirley, NY 11967, USA

Storage Buffer In PBS (50% glycerol)

GENE INFORMATION

Gene Name IL2RA interleukin 2 receptor, alpha [Homo sapiens]

Official Symbol IL2RA

Synonyms IL2RA; interleukin 2 receptor, alpha; IL2R; interleukin-2 receptor subunit alpha; CD25; p55; IL2-RA; IL-2-RA; TAC antigen; IL-2R subunit alpha; IL-2 receptor subunit alpha; TCGFR; IDDM10;

Gene ID 3559

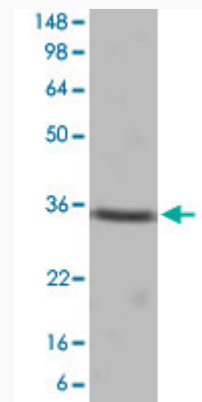
mRNA Refseq NM_000417

Protein Refseq NP_000408

MIM 147730

UniProt ID P01589

Quality Control Testing



 Tel: 1-631-559-9269 1-516-512-3133

 Email: info@creative-biomart.com  Fax: 1-631-938-8127

 45-1 Ramsey Road, Shirley, NY 11967, USA



10% SDS-PAGE Result

 Tel: 1-631-559-9269 1-516-512-3133

 Email: info@creative-biomart.com  Fax: 1-631-938-8127

 45-1 Ramsey Road, Shirley, NY 11967, USA