

## Recombinant Human IL2RA protein, hFc-tagged

Cat. No. IL2RA-636H Lot. No. (See product label)

### SPECIFICATION

<b>Product Overview</b>	Recombinant Human IL2RA protein(Met 1-Cys 213)(NP_000408.1) precursor was expressed in HEK293 with C-terminal fused human IgG1 Fc region.
<b>Species</b>	Human
<b>Source</b>	HEK293
<b>ProteinLength</b>	1-213 aa
<b>Form</b>	Lyophilized from sterile PBS, pH 7.4.
<b>Bio-activity</b>	1. Measured by its ability to bind recombinant rat IL2 in a functional ELISA. 2. Measured by its ability to bind recombinant canine IL2 in a functional ELISA. 3. Measured by its ability to bind recombinant mouse IL2 in a functional ELISA.
<b>Molecular Mass</b>	The mature recombinant human IL2R $\alpha$ /Fc is a disulfide-linked homodimeric protein generated by proteolytic removal of the signal peptide. The reduced monomer consists of 430 amino acids and has a predicted molecular mass of 48.5 kDa. In SDS-PAGE under reducing conditions, the apparent molecular mass of rhIL2R $\alpha$ /Fc monomer is approximately 72 kDa due to glycosylation.
<b>Endotoxin</b>	< 1.0 EU per $\mu$ g of the protein as determined by the LAL method.
<b>Purity</b>	> 90 % as determined by SDS-PAGE

 Tel: 1-631-559-9269 1-516-512-3133

 Email: [info@creative-biomart.com](mailto:info@creative-biomart.com)  Fax: 1-631-938-8127

 45-1 Ramsey Road, Shirley, NY 11967, USA

**Storage** Store it under sterile conditions at -20°C to -80°C upon receiving. Recommend to aliquot the protein into smaller quantities for optimal storage. Avoid repeated freeze-thaw cycles.

**Reconstitution** It is recommended that sterile water be added to the vial to prepare a stock solution of 0.2 ug/ul. Centrifuge the vial at 4°C before opening to recover the entire contents.

## GENE INFORMATION

**Gene Name** [IL2RA interleukin 2 receptor, alpha \[ Homo sapiens \]](#)

**Official Symbol** [IL2RA](#)

**Synonyms** IL2RA; interleukin 2 receptor, alpha; IL2R; interleukin-2 receptor subunit alpha; CD25; p55; IL2-RA; IL-2-RA; TAC antigen; IL-2R subunit alpha; IL-2 receptor subunit alpha; TCGFR; IDDM10;

**Gene ID** [3559](#)

**mRNA Refseq** [NM\\_000417](#)

**Protein Refseq** [NP\\_000408](#)

**MIM** [147730](#)

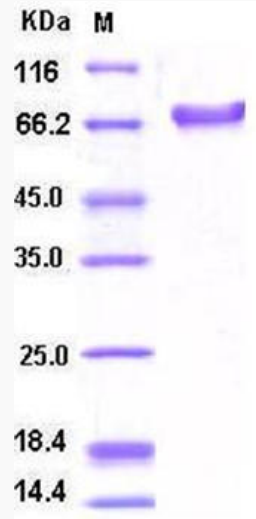
**UniProt ID** [P01589](#)


 Tel: 1-631-559-9269 1-516-512-3133

 Email: [info@creative-biomart.com](mailto:info@creative-biomart.com)  Fax: 1-631-938-8127

 45-1 Ramsey Road, Shirley, NY 11967, USA

SDS-PAGE



 Tel: 1-631-559-9269 1-516-512-3133

 Email: [info@creative-biomart.com](mailto:info@creative-biomart.com)  Fax: 1-631-938-8127

 45-1 Ramsey Road, Shirley, NY 11967, USA