

Recombinant Human IL2RB protein, His-Avi-tagged, Biotinylated

Cat. No. IL2RB-051H Lot. No. (See product label)

SPECIFICATION

Product Overview	Biotinylated Recombinant Human IL2RB protein(NP_000869)(Ala27-Asp239), fused with C-terminal His and Avi tag, was expressed in HEK293.
Species	Human
Source	HEK293
ProteinLength	Ala27-Asp239
Tag	C-His-Avi
Conjugation/Label	Biotin
Form	Lyophilized from 0.22µm filtered solution in PBS (pH 7.4). Normally 5% trehalose is added as protectant before lyophilization.
Bio-activity	Immobilized Human IL-15Ra&IL-15, His Tag at 1ug/ml (100ul/well) on the plate. Dose response curve for Biotinylated Human IL-2 R beta, His Tag with the EC50 of 0.16ug/ml determined by ELISA.
Molecular Mass	The protein has a predicted MW of 27.5 kDa. Due to glycosylation, the protein migrates to 40-50 kDa based on Tris-Bis PAGE result.
Endotoxin	Less than 1EU per µg by the LAL method.

 Tel: 1-631-559-9269 1-516-512-3133

 Email: info@creative-biomart.com  Fax: 1-631-938-8127

 45-1 Ramsey Road, Shirley, NY 11967, USA

Purity	> 95% as determined by Tris-Bis PAGE;> 95% as determined by HPLC
Storage	Reconstituted protein stable at -80°C for 12 months, 4°C for 1 week. Use a manual defrost freezer and avoid repeated freeze-thaw cycles.
Reconstitution	Centrifuge tubes before opening. Reconstituting to a concentration more than 100 µg/ml is recommended. Dissolve the lyophilized protein in distilled water.
Conjugation	Biotin

GENE INFORMATION

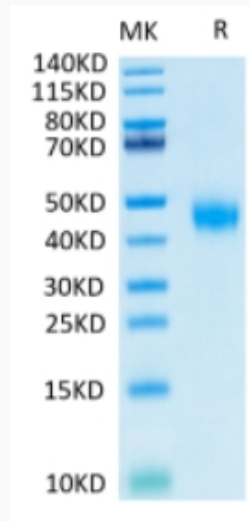
Gene Name	IL2RB interleukin 2 receptor, beta [Homo sapiens]
Official Symbol	IL2RB
Synonyms	IL2RB; interleukin 2 receptor, beta; IL15RB, interleukin 15 receptor, beta; interleukin-2 receptor subunit beta; CD122; p75; IL-2RB; CD122 antigen; IL-2R subunit beta; IL-2 receptor subunit beta; interleukin 15 receptor, beta; high affinity IL-2 receptor beta subunit; high affinity IL-2 receptor subunit beta; IL15RB; P70-75;
Gene ID	3560
mRNA Refseq	NM_000878
Protein Refseq	NP_000869
MIM	146710
UniProt ID	P14784

 Tel: 1-631-559-9269 1-516-512-3133

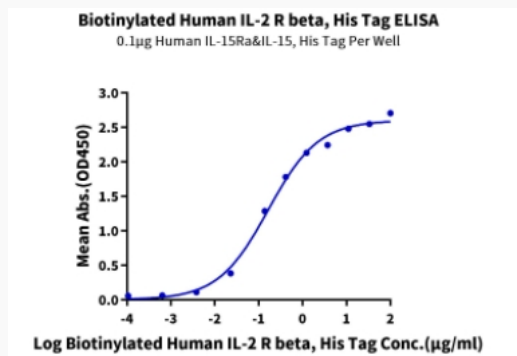
 Email: info@creative-biomart.com  Fax: 1-631-938-8127

 45-1 Ramsey Road, Shirley, NY 11967, USA

Tris-Bis PAGE



ELISA Data



 Tel: 1-631-559-9269 1-516-512-3133

 Email: info@creative-biomart.com  Fax: 1-631-938-8127

 45-1 Ramsey Road, Shirley, NY 11967, USA