

## Recombinant Mouse IL2RB Protein, His-tagged

Cat. No. IL2RB-1257M Lot. No. (See product label)

### SPECIFICATION

<b>Product Overview</b>	Recombinant Mouse IL2RB Protein (27-240aa) was expressed in Yeast with N-terminal His-tag.
<b>Species</b>	Mouse
<b>Source</b>	Yeast
<b>ProteinLength</b>	27-240 a.a.
<b>Description</b>	The interleukin 2 receptor is composed of alpha and beta subunits. The beta subunit encoded by this gene is very homologous to the human beta subunit and also shows structural similarity to other cytokine receptors.
<b>Form</b>	Tris-based buffer, 50% glycerol.
<b>Molecular Mass</b>	27.0 kDa
<b>AA Sequence</b>	AVKNCSHLECFYNSRANVSCMWSHEEALNVTTCVHAKSNLRHWNKTCELTLVRQ ASWACNLILGSFPES QSLTSVDLLDINVVCWEEKGWRRVKTCDHFDPDLRLVAPHS LQVLHIDTQRCNIS WKVSQVSHYIEPYL EFEARRRLLGHSWEDASVLSLKQRQQWLFLEMLIPSTSYEVQVRVKAQRNNTGTW SPWSQPLTFRTRPAD PMKE

 Tel: 1-631-559-9269 1-516-512-3133

 Email: [info@creative-biomart.com](mailto:info@creative-biomart.com)  Fax: 1-631-938-8127

 45-1 Ramsey Road, Shirley, NY 11967, USA

**Purity** Greater than 90% as determined by SDS-PAGE.

**Storage** The shelf life of liquid form is 6 months at -20 centigrade/-80 centigrade. The shelf life of lyophilized form is 12 months at -20 centigrade/-80 centigrade.

## GENE INFORMATION

**Gene Name** IL2rb interleukin 2 receptor, beta chain [ *Mus musculus* (house mouse) ]

**Official Symbol** IL2RB

**Synonyms** p70; CD122; IL15Rbeta; IL-2Rbeta; IL-15Rbeta; IL-2/15Rbeta

**Gene ID** 16185

**mRNA Refseq** NM\_008368.4

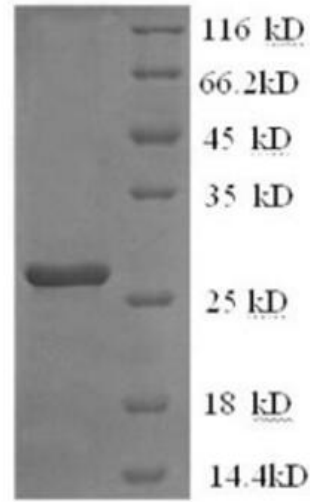
**Protein Refseq** NP\_032394.1

**UniProt ID** P16297

 Tel: 1-631-559-9269 1-516-512-3133

 Email: [info@creative-biomart.com](mailto:info@creative-biomart.com)  Fax: 1-631-938-8127

 45-1 Ramsey Road, Shirley, NY 11967, USA



 Tel: 1-631-559-9269 1-516-512-3133

 Email: [info@creative-biomart.com](mailto:info@creative-biomart.com)  Fax: 1-631-938-8127

 45-1 Ramsey Road, Shirley, NY 11967, USA