

Recombinant Human IL2RB Protein, His-tagged

Cat. No. IL2RB-2310H Lot. No. (See product label)

SPECIFICATION

Product Overview	Recombinant Human IL2RB Protein (Ala27-Thr240) with a N-His tag was expressed in E. coli.
Species	Human
Source	E.coli
ProteinLength	Ala27-Thr240
Description	<p>The interleukin 2 receptor, which is involved in T cell-mediated immune responses, is present in 3 forms with respect to ability to bind interleukin 2. The low affinity form is a monomer of the alpha subunit and is not involved in signal transduction. The intermediate affinity form consists of an alpha/beta subunit heterodimer, while the high affinity form consists of an alpha/beta/gamma subunit heterotrimer. Both the intermediate and high affinity forms of the receptor are involved in receptor-mediated endocytosis and transduction of mitogenic signals from interleukin 2. The protein encoded by this gene represents the beta subunit and is a type I membrane protein. The use of alternative promoters results in multiple transcript variants encoding the same protein. The protein is primarily expressed in the hematopoietic system. The use by some variants of an alternate promoter in an upstream long terminal repeat (LTR) results in placenta-specific expression.</p>
Form	Freeze-dried powder
Molecular Mass	Predicted Molecular Mass: 26.2 kDa

 Tel: 1-631-559-9269 1-516-512-3133

 Email: info@creative-biomart.com  Fax: 1-631-938-8127

 45-1 Ramsey Road, Shirley, NY 11967, USA

	Accurate Molecular Mass: 28 kDa
Endotoxin	<1.0 EU per 1g (determined by the LAL method).
Purity	> 95%
Applications	Positive Control; Immunogen; SDS-PAGE; WB.
Stability	The thermal stability is described by the loss rate. The loss rate was determined by accelerated thermal degradation test, that is, incubate the protein at 37 centigrade for 48h, and no obvious degradation and precipitation were observed. The loss rate is less than 5% within the expiration date under appropriate storage condition.
Storage	Avoid repeated freeze/thaw cycles. Store at 2-8 centigrade for one month. Aliquot and store at -80 centigrade for 12 months.
Storage Buffer	PBS, pH7.4, containing 0.01% SKL, 1mM DTT, 5% Trehalose and Proclin300.
Reconstitution	Reconstitute in PBS or others.

GENE INFORMATION

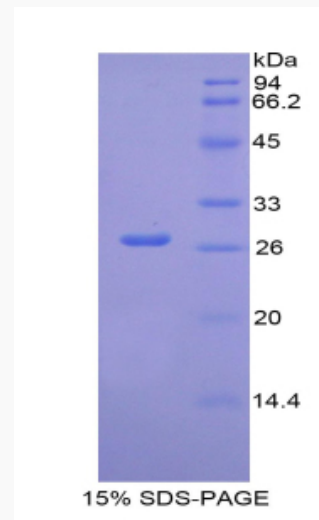
Gene Name	IL2RB interleukin 2 receptor, beta [Homo sapiens (human)]
Official Symbol	IL2RB
Synonyms	IL2RB; interleukin 2 receptor, beta; IL15RB, interleukin 15 receptor, beta; interleukin-2 receptor subunit beta; CD122; p75; IL-2RB; CD122 antigen; IL-2R subunit beta; IL-2 receptor subunit beta; interleukin 15 receptor, beta; high affinity IL-2 receptor beta subunit; high affinity IL-2 receptor subunit beta; IL15RB; P70-75;

 Tel: 1-631-559-9269 1-516-512-3133

 Email: info@creative-biomart.com  Fax: 1-631-938-8127

 45-1 Ramsey Road, Shirley, NY 11967, USA

Gene ID	3560
mRNA Refseq	NM_000878
Protein Refseq	NP_000869
MIM	146710
UniProt ID	P14784



Tel: 1-631-559-9269 1-516-512-3133

Email: info@creative-biomart.com Fax: 1-631-938-8127

45-1 Ramsey Road, Shirley, NY 11967, USA