

Active Recombinant Human IL2RB protein, Fc-tagged

Cat. No. IL2RB-782H Lot. No. (See product label)

SPECIFICATION

Product Overview	Active Recombinant Human IL2RB protein(NP_000869)(Ala27-Asp239) is expressed from HEK293 with hFc (IgG1) tag at the C-Terminus.
Species	Human
Source	HEK293
ProteinLength	27-239 aa
Form	Lyophilized from 0.22µm filtered solution in PBS (pH 7.4).
Bio-activity	Immobilized Human IL-2 R beta, hFc Tag at 1µg/ml (100µl/well) on the plate. Dose response curve for Biotinylated Human IL-15Ra&IL-15, His Tag with the EC50 of 18.5ng/ml determined by ELISA.
Molecular Mass	The protein has a predicted MW of 51.35 kDa. Due to glycosylation, the protein migrates to 60-70 kDa based on Bis-Tris PAGE result.
Endotoxin	Less than 1 EU per µg by the LAL method.
Purity	> 95% as determined by Bis-Tris PAGE > 95% as determined by HPLC
Storage	-20 to -80°C for 12 months as supplied from date of receipt. -80°C for 3 months after reconstitution. Recommend to aliquot the protein into smaller quantities for optimal storage. Please minimize freeze-thaw cycles.

 Tel: 1-631-559-9269 1-516-512-3133

 Email: info@creative-biomart.com  Fax: 1-631-938-8127

 45-1 Ramsey Road, Shirley, NY 11967, USA

Reconstitution Dissolve the lyophilized protein in distilled water.

GENE INFORMATION

Gene Name IL2RB interleukin 2 receptor, beta [Homo sapiens]

Official Symbol IL2RB

Synonyms IL2RB; interleukin 2 receptor, beta; IL15RB, interleukin 15 receptor, beta; interleukin-2 receptor subunit beta; CD122; p75; IL-2RB; CD122 antigen; IL-2R subunit beta; IL-2 receptor subunit beta; interleukin 15 receptor, beta; high affinity IL-2 receptor beta subunit; high affinity IL-2 receptor subunit beta; IL15RB; P70-75;

Gene ID 3560

mRNA Refseq NM_000878

Protein Refseq NP_000869

MIM 146710

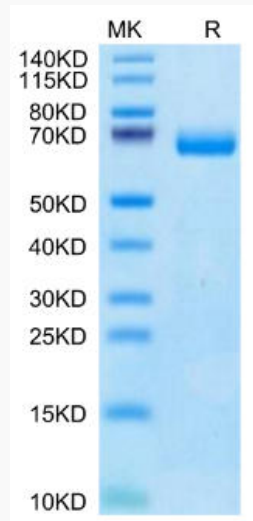
UniProt ID P14784

 Tel: 1-631-559-9269 1-516-512-3133

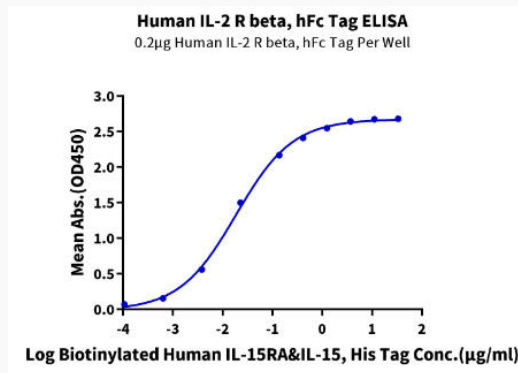
 Email: info@creative-biomart.com  Fax: 1-631-938-8127

 45-1 Ramsey Road, Shirley, NY 11967, USA

Bis-Tris PAGE



ELISA Data



Tel: 1-631-559-9269 1-516-512-3133

Email: info@creative-biomart.com Fax: 1-631-938-8127

45-1 Ramsey Road, Shirley, NY 11967, USA