

Recombinant Human IL2RB protein, His-Avi-tagged

Cat. No. IL2RB-869H Lot. No. (See product label)

SPECIFICATION

Product Overview	Recombinant Human IL2RB protein(NP_000869)(Ala27-Asp239) is expressed from HEK293 with His tag and Avi tag at the C-Terminus.
Species	Human
Source	HEK293
ProteinLength	Ala27-Asp239
Form	Lyophilized from 0.22µm filtered solution in PBS (pH 7.4). Normally 8% trehalose is added as protectant before lyophilization.
Bio-activity	Immobilized Human IL-2 R beta, His Tag at 2µg/ml (100µl/well) on the plate. Dose response curve for Biotinylated Human IL-15Ra&IL-15, hFc Tag with the EC50 of 43.7ng/ml determined by ELISA.
Molecular Mass	The protein has a predicted MW of 27.5 kDa. Due to glycosylation, the protein migrates to 40-50 kDa based on Tris-Bis PAGE result.
Endotoxin	Less than 1EU per µg by the LAL method.
Purity	> 95% as determined by Tris-Bis PAGE > 95% as determined by HPLC
Storage	-20 to -80°C for 12 months as supplied from date of receipt.

 Tel: 1-631-559-9269 1-516-512-3133

 Email: info@creative-biomart.com  Fax: 1-631-938-8127

 45-1 Ramsey Road, Shirley, NY 11967, USA

-80°C for 3-6 months after reconstitution.
 2-8°C for 2-7 days after reconstitution.
 Recommend to aliquot the protein into smaller quantities for optimal storage. Please minimize freeze-thaw cycles.

Reconstitution

Centrifuge the tube before opening. Reconstituting to a concentration more than 100 µg/ml is recommended. Dissolve the lyophilized protein in distilled water.

GENE INFORMATION

Gene Name

IL2RB interleukin 2 receptor, beta [Homo sapiens]

Official Symbol

IL2RB

Synonyms

IL2RB; interleukin 2 receptor, beta; IL15RB, interleukin 15 receptor, beta; interleukin-2 receptor subunit beta; CD122; p75; IL-2RB; CD122 antigen; IL-2R subunit beta; IL-2 receptor subunit beta; interleukin 15 receptor, beta; high affinity IL-2 receptor beta subunit; high affinity IL-2 receptor subunit beta; IL15RB; P70-75;

Gene ID

3560

mRNA Refseq

NM_000878

Protein Refseq

NP_000869

MIM

146710

UniProt ID

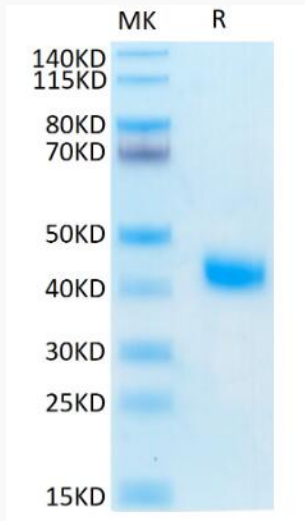
P14784

 Tel: 1-631-559-9269 1-516-512-3133

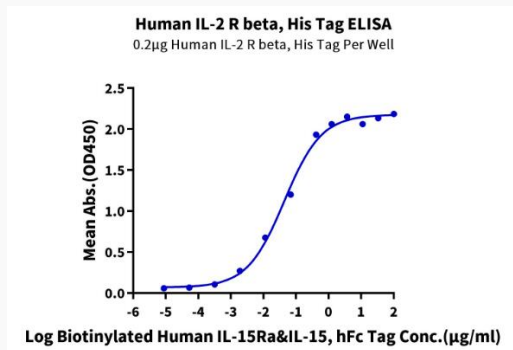
 Email: info@creative-biomart.com  Fax: 1-631-938-8127

 45-1 Ramsey Road, Shirley, NY 11967, USA

Tris-Bis PAGE



ELISA Data



Tel: 1-631-559-9269 1-516-512-3133

Email: info@creative-biomart.com Fax: 1-631-938-8127

45-1 Ramsey Road, Shirley, NY 11967, USA