

Recombinant Human IL2RB protein, His-Avi-tagged, Biotinylated

Cat. No. IL2RB-869HB **Lot. No.** (See product label)

SPECIFICATION

| | |
|-------------------------|---|
| Product Overview | Biotinylated Recombinant Human IL2RB protein(NP_000869)(Ala27-Asp239) is expressed from HEK293 with His tag and Avi tag at the C-Terminus. |
| Species | Human |
| Source | HEK293 |
| ProteinLength | Ala27-Asp239 |
| Form | Lyophilized from 0.22µm filtered solution in PBS (pH 7.4). Normally 8% trehalose is added as protectant before lyophilization. |
| Bio-activity | Immobilized Human IL-15Ra&IL-15, His Tag at 1µg/ml (100µl/well) on the plate. Dose response curve for Biotinylated Human IL-2 R beta, His Tag with the EC50 of 0.16µg/ml determined by ELISA. |
| Molecular Mass | The protein has a predicted MW of 27.5 kDa. Due to glycosylation, the protein migrates to 40-50 kDa based on Tris-Bis PAGE result. |
| Endotoxin | Less than 1EU per µg by the LAL method. |
| Purity | > 95% as determined by Tris-Bis PAGE > 95% as determined by HPLC |

 Tel: 1-631-559-9269 1-516-512-3133

 Email: info@creative-biomart.com  Fax: 1-631-938-8127

 45-1 Ramsey Road, Shirley, NY 11967, USA

Storage

-20 to -80°C for 12 months as supplied from date of receipt.
 -80°C for 3-6 months after reconstitution.
 2-8°C for 2-7 days after reconstitution.
 Recommend to aliquot the protein into smaller quantities for optimal storage. Please minimize freeze-thaw cycles.

Reconstitution

Centrifuge the tube before opening. Reconstituting to a concentration more than 100 µg/ml is recommended. Dissolve the lyophilized protein in distilled water.

Conjugation Biotin

GENE INFORMATION

Gene Name [IL2RB interleukin 2 receptor, beta \[Homo sapiens \]](#)

Official Symbol [IL2RB](#)

Synonyms

IL2RB; interleukin 2 receptor, beta; IL15RB, interleukin 15 receptor, beta; interleukin-2 receptor subunit beta; CD122; p75; IL-2RB; CD122 antigen; IL-2R subunit beta; IL-2 receptor subunit beta; interleukin 15 receptor, beta; high affinity IL-2 receptor beta subunit; high affinity IL-2 receptor subunit beta; IL15RB; P70-75;

Gene ID [3560](#)

mRNA Refseq [NM_000878](#)

Protein Refseq [NP_000869](#)

MIM [146710](#)

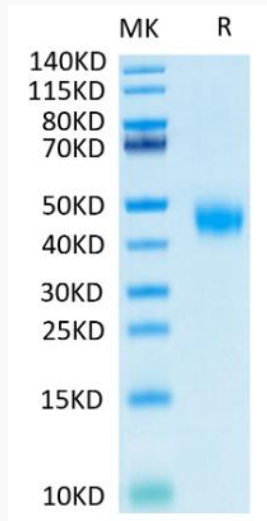
UniProt ID [P14784](#)

 Tel: 1-631-559-9269 1-516-512-3133

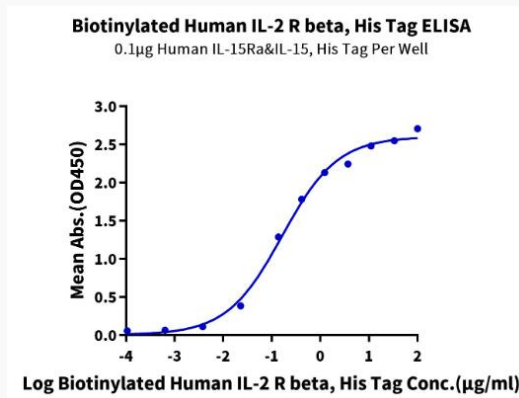
 Email: info@creative-biomart.com  Fax: 1-631-938-8127

 45-1 Ramsey Road, Shirley, NY 11967, USA

Tris-Bis PAGE



ELISA Data



 Tel: 1-631-559-9269 1-516-512-3133

 Email: info@creative-biomart.com  Fax: 1-631-938-8127

 45-1 Ramsey Road, Shirley, NY 11967, USA