

Recombinant Human interleukin 2 receptor, gamma Protein, His tagged

Cat. No. IL2RG-038H **Lot. No.** (See product label)

SPECIFICATION

Product Overview

Recombinant human IL2RG/CD132 protein (P31785) (Leu 23-Ala 262) with a His tag at the C-terminus was expressed in HEK293.

Species

Human

Source


HEK293

ProteinLength


23-262aa

Description

The protein encoded by this gene is an important signaling component of many interleukin receptors, including those of interleukin -2, -4, -7 and -21, and is thus referred to as the common gamma chain. Mutations in this gene cause X-linked severe combined immunodeficiency (XSCID), as The IL2RG gene provides instructions for making a protein called the common gamma chain. This protein is a component of several different receptors that are involved in immune system function. The receptors span the cell membrane, with one end outside the cell like an antenna and the other end inside to transmit signals to the nucleus. Other proteins attach to these receptors, like a key in a lock, to trigger a series of chemical reactions inside the cell. Receptors containing the common gamma chain are located on the surface of immature blood-forming cells in bone marrow. They partner with other proteins to direct blood-forming cells to form lymphocytes (a type of white blood cell). The receptors also regulate the growth and maturation of several subtypes of lymphocytes: T cells, B cells, and natural killer cells. These cells kill viruses, make

 Tel: 1-631-559-9269 1-516-512-3133

 Email: info@creative-biomart.com  Fax: 1-631-938-8127

 45-1 Ramsey Road, Shirley, NY 11967, USA

antibodies, and help regulate the entire immune system.

Tag

C-His

Molecular Mass

29.6 kDa

Endotoxin

Less than 1.0 EU/μg by the LAL method.

Purity

>95% as determined by SDS-PAGE.

Storage

Please avoid repeated freeze-thaw cycles. Samples are stable for up to twelve months from date of receipt at -20 to -80 centigrade. It is recommended that aliquot the reconstituted solution to minimize freeze-thaw cycles.

Storage Buffer

Lyophilized from a 0.2 μm filtered solution of PBS, pH7.4, 5% Trehalose, 5% mannitol.

Reconstitution

Reconstitute at 250 μg/mL in sterile water.

GENE INFORMATION

Gene Name

IL2RG interleukin 2 receptor, gamma [*Homo sapiens* (human)]

Official Symbol

IL2RG

Synonyms

IL2RG; interleukin 2 receptor, gamma; CIDX, combined immunodeficiency, X linked, IMD4, SCIDX1, severe combined immunodeficiency; cytokine receptor common subunit gamma; CD132; gammaC; gamma(c); CD132 antigen; common gamma-chain; IL-2R subunit gamma; IL-2 receptor subunit gamma; severe combined immunodeficiency; combined immunodeficiency, X-linked; common cytokine receptor gamma chain; interleukin-2 receptor subunit gamma; P64; CIDX; IMD4; SCIDX; IL-

 Tel: 1-631-559-9269 1-516-512-3133


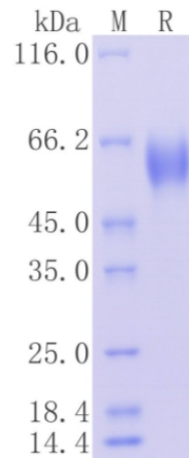
 Email: info@creative-biomart.com  Fax: 1-631-938-8127

 45-1 Ramsey Road, Shirley, NY 11967, USA

2RG; SCIDX1;

Gene ID 3561**mRNA Refseq** NM_000206**Protein Refseq** NP_000197**MIM** 308380**UniProt ID** P31785

**Protein on SDS-
PAGE under
reducing (R)
condition.**

 Tel: 1-631-559-9269 1-516-512-3133 Email: info@creative-biomart.com  Fax: 1-631-938-8127 45-1 Ramsey Road, Shirley, NY 11967, USA