

## Recombinant Human IL2RG Protein, C-His-tagged

Cat. No. IL2RG-067H Lot. No. (See product label)

### SPECIFICATION

<b>Product Overview</b>	Recombinant Human IL2RG Protein with C-His tag was expressed in E. coli.
<b>Species</b>	Human
<b>Source</b>	E.coli
<b>Description</b>	<p>The IL-2 receptor is a multicomponent complex consisting of three subunits, <math>\alpha</math>, <math>\beta</math> and <math>\gamma</math>, each of which is required for high affinity binding of IL-2. The <math>\alpha</math> chain functions primarily in binding IL-2, whereas the <math>\beta</math> and <math>\gamma</math> chains contribute to IL-2 binding and are essential to IL-2-induced activation of signaling pathways leading to T cell growth. Both IL-4R and IL-7R were initially described as single chain high affinity ligand binding cytokine receptors. However, it is now well established that the IL-2R <math>\gamma</math> chain functions as a second subunit of the high affinity IL-4R and IL-7R receptors. Consequently, the originally described subunits of these latter receptors are now referred to as IL-4Ra and IL-7Ra respectively, while the common subunit is referred to as <math>\gamma</math>c. Although the common <math>\gamma</math> chain enhances ligand binding in these three cytokine receptors, it has no capacity to bind these ligands on its own. There is evidence that the <math>\gamma</math> chain is also a subunit of IL-13R.</p>
<b>Molecular Mass</b>	~26 kDa
<b>AA Sequence</b>	<p>LNTTILTPNGNEDTTADFFLTTMPTDSLVSSTLPLPEVQCFVFNVEYMNCTWNSSSE  PQPTNLTLHYWYKNSDNDKVQKCSHYLFSEEITSGCQLQKKEIHLYQTFVVQLQDP  REPRRQATQMLKLQNLVIPWAPENLTLHKLSESQLELNWNNRFLNHCLEHLVQYRT</p>

 Tel: 1-631-559-9269 1-516-512-3133

 Email: [info@creative-biomart.com](mailto:info@creative-biomart.com)  Fax: 1-631-938-8127

 45-1 Ramsey Road, Shirley, NY 11967, USA

DWDHSWTEQSVDIRHKFSLPSVDGQKRYTFRVRSRFNPLCGSAQHWSEWSHPIH  
WGSNTSKENPFLFALEA

**Purity**

Transferred into competent cells and the supernatant was purified by NI column affinity chromatography and the purity is > 85% (by SDS-PAGE).

**Notes**

For research use only, not for use in diagnostic procedure.

**Storage**

Store at 4 centigrade short term. Aliquot and store at -20 centigrade long term. Avoid freeze-thaw cycles.

**Concentration**

≥0.5 mg/mL

**Storage Buffer**

PBS, 4M Urea, pH7.4

## GENE INFORMATION

**Gene Name**

IL2RG interleukin 2 receptor, gamma [ Homo sapiens (human) ]

**Official Symbol**

IL2RG

**Synonyms**

IL2RG; interleukin 2 receptor, gamma; CIDX, combined immunodeficiency, X linked , IMD4, SCIDX1, severe combined immunodeficiency; cytokine receptor common subunit gamma; CD132; gammaC; gamma(c); CD132 antigen; common gamma-chain; IL-2R subunit gamma; IL-2 receptor subunit gamma; severe combined immunodeficiency; combined immunodeficiency, X-linked; common cytokine receptor gamma chain; interleukin-2 receptor subunit gamma; P64; CIDX; IMD4; SCIDX; IL-2RG; SCIDX1;

**Gene ID**

3561

 Tel: 1-631-559-9269 1-516-512-3133

 Email: [info@creative-biomart.com](mailto:info@creative-biomart.com)  Fax: 1-631-938-8127

 45-1 Ramsey Road, Shirley, NY 11967, USA

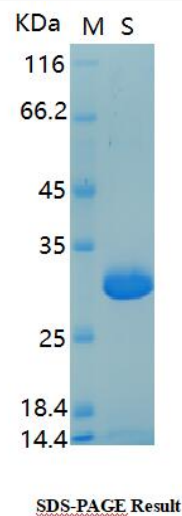
mRNA Refseq [NM\\_000206](#)

Protein Refseq [NP\\_000197](#)

MIM [308380](#)

UniProt ID [P31785](#)

#### SDS-PAGE



 Tel: 1-631-559-9269 1-516-512-3133

 Email: [info@creative-biomart.com](mailto:info@creative-biomart.com)  Fax: 1-631-938-8127

 45-1 Ramsey Road, Shirley, NY 11967, USA