

Recombinant Human IL2RG, Gamma, Fc Chimera

Cat. No. IL2RG-119H Lot. No. (See product label)

SPECIFICATION

Product Overview	Recombinant Human interleukin 2 receptor, gamma (severe combined immunodeficiency) protein was expressed in modified <i>human 293 cells</i> encoding the signal peptide and extracellular domain of human Interleukin 2 receptor gamma chain (aa 1-259). It was fused to the Fc region of human IgG1 (aa 93-330).
Species	Human
Source	HEK293
Protein Length	1-259 a.a.
Description	Interleukin-2 (IL-2) is a pleiotropic glycoprotein that mediates the production of regulatory T cells and promotes T cell dependent tolerance. Mutations in the gene encoding IL-2R gamma results in X-linked severe combined immunodeficiency, which is characterised by an absence of T and NK cells, and near normal numbers of functionally deficient B cells.
Amino Acid Sequence	LNTTILTPN GNEDTTADFFLT MPTDSL SVSTLPLP EVQCFVFNV EYMNCTWN SSSEPQPTN L T L H YWYK NSDNDK VQKCSH YLFSEEI TSGCQL QKKEIHL YQTFVV QLQDPR EP R RQ ATQ MLKL QNLVIPW APENLTL HKLSESQ LELNWN NRFLNHC LEHLVQY R TDWDHS WTEQS VDYRHK FSLPSV DGQKRY TFRVRS RFNPLC GSAQHW S EWSHP IHWGS NTSKE NPFLFA WIPKVD KKVEP KSCDK THTCPP CPAPE L LGGPS VFLFPP KPKDTL MISRTP EVTCVV VDV SHE DPEVKF NWWYVDG VEVHN AKTKPR EEQYN STYRVV SVLTVL HQDWL NGKEY KCKVS

 Tel: 1-631-559-9269 1-516-512-3133

 Email: info@creative-biomart.com  Fax: 1-631-938-8127

 45-1 Ramsey Road, Shirley, NY 11967, USA

NKALPAPIE KTISKA KGQP REPQVYT LPPSRDELTKN QVSLTCLVKGFY P
SDIAVEWESN GQ PENNYKTTP PVLDSGD SFFLYSKL TVDKSRW QQGNVFS
CSVMHEAL HNHY TQ K S LSLSPGK.

Molecular Mass

IL-2R gamma-Fc Chimera migrates as a band between 75 and 105 kDa in SDS-PAGE due to post-translation modifications, in particular glycosylation. This compares with the unmodified IL-2R gamma-Fc that has a predicted molecular mass of 55.1 kDa.

PI

IL-2R gamma-Fc Chimera separates into a number of isoforms with a pI between 4.9 and 7.2 in 2D PAGE due to post-translational modifications, in particular glycosylation. This compares with the unmodified IL-2 R gamma-Fc that has a predicted pI of 6.68.

% Carbohydrate

Purified IL-2R gamma-Fc Chimera consists of 25-50% carbohydrate by weight.

Glycosylation

IL-2R gamma-Fc Chimera has N-linked and O-linked oligosaccharides.

Purity

>95%, as determined by SDS-PAGE and visualized by silver stain.

Formulation

When reconstituted in 0.5 ml sterile phosphate-buffered saline, the solution will contain 1% human serum albumin (HSA) and 10% trehalose.

Reconstitution

It is recommended that 0.5 ml of sterile phosphate-buffered saline be added to the vial.

Storage

Lyophilized products should be stored at 2 to 8°C. Following reconstitution short-term storage at 4°C is recommended, and longer-term storage of aliquots at -18 to -20°C. Repeated freeze thawing is not recommended.

 Tel: 1-631-559-9269 1-516-512-3133

 Email: info@creative-biomart.com  Fax: 1-631-938-8127

 45-1 Ramsey Road, Shirley, NY 11967, USA

GENE INFORMATION

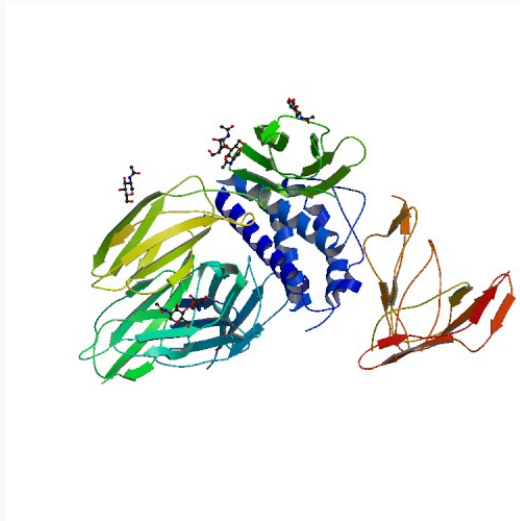
Gene Name	IL2RG interleukin 2 receptor, gamma (severe combined immunodeficiency) [Homo sapiens]
Synonyms	IL2RG; interleukin 2 receptor, gamma (severe combined immunodeficiency); CD132; IMD4; SCIDX; SCIDX1; common cytokine receptor gamma chain; interleukin 2 receptor gamma chain; interleukin 2 receptor, gamma; p64; interleukin 2 receptor, gamma; Interleukin-2 receptor gamma chain; IL-2R gamma chain; CD132 antigen
Gene ID	3561
mRNA Refseq	NM_000206
Protein Refseq	NP_000197
MIM	308380
UniProt ID	P31785
Chromosome Location	Xq13.1
Pathway	Cytokine-cytokine receptor interaction; Jak-STAT signaling pathway; Endocytosis; Primary immunodeficiency e
Function	interleukin-2 receptor activity; protein binding; receptor activity

 Tel: 1-631-559-9269 1-516-512-3133

 Email: info@creative-biomart.com  Fax: 1-631-938-8127

 45-1 Ramsey Road, Shirley, NY 11967, USA

PDB rendering based
on 2b5i.



 Tel: 1-631-559-9269 1-516-512-3133

 Email: info@creative-biomart.com  Fax: 1-631-938-8127

 45-1 Ramsey Road, Shirley, NY 11967, USA