

Recombinant Human IL2RG protein(56-254aa(N75Q)), His-tagged

Cat. No. IL2RG-2918H **Lot. No.** (See product label)

SPECIFICATION

Product Overview	Recombinant Human IL2RG protein(P31785)(56-254aa(N75Q)), fused with N-terminal His tag, was expressed in E. coli.
Species	Human
Source	E.coli
ProteinLength	56-254aa(N75Q)
Form	If the delivery form is liquid, the default storage buffer is Tris/PBS-based buffer, 5%-50% glycerol. If the delivery form is lyophilized powder, the buffer before lyophilization is Tris/PBS-based buffer, 6% Trehalose, pH 8.0.
Molecular Mass	26.6 kDa
Purity	Greater than 85% as determined by SDS-PAGE.
Storage	Store at -20°C/-80°C upon receipt, aliquoting is necessary for mutiple use. Avoid repeated freeze-thaw cycles.
Reconstitution	We recommend that this vial be briefly centrifuged prior to opening to bring the contents to the bottom. Please reconstitute protein in deionized sterile water to a concentration of 0.1-1.0 mg/mL. We recommend to add 5-50% of glycerol (final concentration) and aliquot for long-term storage at -20°C/-80°C.

 Tel: 1-631-559-9269 1-516-512-3133

 Email: info@creative-biomart.com  Fax: 1-631-938-8127

 45-1 Ramsey Road, Shirley, NY 11967, USA

AA Sequence

PLPEVQCFVFNVEYMNCTWQSSSEPQPTNLTLHYWYKNSDNDKVQKCSHYLFSEEI
 TSGCQLQKKEIHLYQTFVVQLQDPREPRRQATQMLKLQNLVIPWAPENLTLHKLSES
 QLELNWNNRFLNHCLEHLVQYRTDWDHSWTEQSVDYRHKFSLPSVDGQKRYTFR
 VRSRFNPLCGSAQHWSEWSHPIHWGSNTSKEN

GENE INFORMATION

Gene Name [IL2RG interleukin 2 receptor, gamma \[Homo sapiens \]](#)

Official Symbol [IL2RG](#)

Synonyms

IL2RG; interleukin 2 receptor, gamma; CIDX, combined immunodeficiency, X linked ,
 IMD4, SCIDX1, severe combined immunodeficiency; cytokine receptor common
 subunit gamma; CD132; gammaC; gamma(c); CD132 antigen; common gamma-
 chain; IL-2R subunit gamma; IL-2 receptor subunit gamma; severe combined
 immunodeficiency; combined immunodeficiency, X-linked; common cytokine receptor
 gamma chain; interleukin-2 receptor subunit gamma; P64; CIDX; IMD4; SCIDX; IL-
 2RG; SCIDX1;

Gene ID [3561](#)

mRNA Refseq [NM_000206](#)

Protein Refseq [NP_000197](#)

MIM [308380](#)

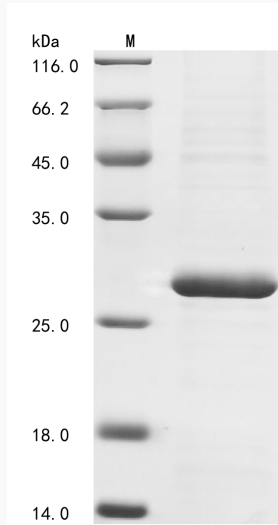
UniProt ID [P31785](#)

 Tel: 1-631-559-9269 1-516-512-3133

 Email: info@creative-biomart.com  Fax: 1-631-938-8127

 45-1 Ramsey Road, Shirley, NY 11967, USA

SDS-PAGE



 Tel: 1-631-559-9269 1-516-512-3133

 Email: info@creative-biomart.com  Fax: 1-631-938-8127

 45-1 Ramsey Road, Shirley, NY 11967, USA