

Recombinant Pig IL2RG protein, His-tagged

Cat. No. IL2RG-3369P Lot. No. (See product label)

SPECIFICATION

| | |
|-------------------------|--|
| Product Overview | Recombinant Pig IL2RG protein(Leu23~Pro254), fused with N-terminal His Tag, was expressed in E.coli. |
| Species | Pig |
| Source | E.coli |
| ProteinLength | Leu23~Pro254 |
| Form | PBS, pH7.4, containing 0.01% SKL, 1mM DTT, 5% Trehalose and Proclin300. |
| Molecular Mass | 31kDa |
| Endotoxin | <1.0EU per 1g (determined by the LAL method) |
| Purity | > 95% |
| Storage | Avoid repeated freeze/thaw cycles. Store at 2-8°C for one month. Aliquot and store at -80°C for 12 months. |
| Reconstitution | Reconstitute in ddH ₂ O to a concentration of 0.1-0.5 mg/mL. Do not vortex. |

GENE INFORMATION

Gene Name IL2RG interleukin 2 receptor, gamma [*Sus scrofa*]

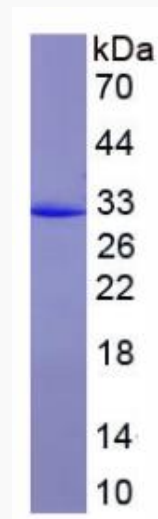
 Tel: 1-631-559-9269 1-516-512-3133

 Email: info@creative-biomart.com  Fax: 1-631-938-8127

 45-1 Ramsey Road, Shirley, NY 11967, USA

Official Symbol IL2RG**Synonyms**

IL2RG; interleukin 2 receptor, gamma; cytokine receptor common subunit gamma; interleukin 2 receptor gamma; interleukin 2 receptor, gamma (severe combined immunodeficiency);

Gene ID 397156**mRNA Refseq** NM_214083**Protein Refseq** NP_999248**SDS-PAGE** Tel: 1-631-559-9269 1-516-512-3133 Email: info@creative-biomart.com  Fax: 1-631-938-8127 45-1 Ramsey Road, Shirley, NY 11967, USA