

## Recombinant Cynomolgus IL2RG protein, His-tagged

**Cat. No.** IL2RG-382C    **Lot. No.** (See product label)

### SPECIFICATION

<b>Product Overview</b>	Cynomolgus CD132/IL2RG Protein is expressed from mammalian with His Tag at the C-terminal. It contains Leu23-Asn254.
<b>Species</b>	Cynomolgus
<b>Source</b>	HEK293
<b>ProteinLength</b>	Leu23-Asn254
<b>Description</b>	The gamma chain of the high affinity functional human IL-2 receptor complex belongs to the hematopoietin receptor family. IL-2 R gamma is a 369 amino acid residue protein consisting of a 22 residue signal sequence, a 232 residue extracellular domain, a 29 residue transmembrane domain and an 86 residue cytoplasmic domain. Although IL-2 R gamma by itself does not bind IL2 with any appreciable affinity, it is required for IL-2 receptor signaling.
<b>Form</b>	Supplied as 0.22um filtered solution in PBS (pH 7.4).
<b>Molecular Mass</b>	The protein has a predicted MW of 28.2KDa. Due to glycosylation, the protein migrates to 50- 68KDa based on Bis-Tris PAGE result.
<b>Endotoxin</b>	Less than 0.1EU per ug by the LAL method.
<b>Purity</b>	> 95% as determined by SDS-PAGE

 Tel: 1-631-559-9269    1-516-512-3133

 Email: [info@creative-biomart.com](mailto:info@creative-biomart.com)     Fax: 1-631-938-8127

 45-1 Ramsey Road, Shirley, NY 11967, USA

**Storage** The product should be stored at -70°C. Please do not repeated freeze-thaw cycles.

## GENE INFORMATION

**Gene Name** IL2RG interleukin 2 receptor subunit gamma [ *Macaca mulatta* (Rhesus monkey) ]

**Official Symbol** IL2RG

**Synonyms**

CD132 antigen; CD132; CIDX; combined immunodeficiency, X-linked; common cytokine receptor gamma chain; Common gamma Chain; common gamma-chain; cytokine receptor common subunit gamma; gamma(c); IL-2 R gamma; IL-2 receptor subunit gamma; IL2R gamma; IL-2R subunit gamma; IL2RG; IL-2RG; IMD4; interleukin 2 receptor, gamma; Interleukin-2 receptor subunit gamma; P64; SCIDX; SCIDX1; severe combined immunodeficiency.

**Gene ID** 641338

**mRNA Refseq** [NM\\_001035529.1](#)

**Protein Refseq** [NP\\_001030606.1](#)

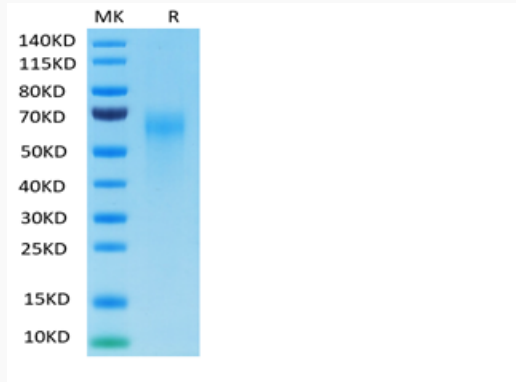
**UniProt ID** [Q38JL2](#)

 Tel: 1-631-559-9269 1-516-512-3133

 Email: [info@creative-biomart.com](mailto:info@creative-biomart.com)  Fax: 1-631-938-8127

 45-1 Ramsey Road, Shirley, NY 11967, USA

**Tris-Bis PAGE of  
IL2RG-382C**



 Tel: 1-631-559-9269 1-516-512-3133

 Email: [info@creative-biomart.com](mailto:info@creative-biomart.com)  Fax: 1-631-938-8127

 45-1 Ramsey Road, Shirley, NY 11967, USA