

Recombinant Human IL2RG Protein (Met1-Asn254), C-His tagged

Cat. No. IL2RG-4275H Lot. No. (See product label)

SPECIFICATION

Product Overview	Recombinant human IL2RG (Met1-Asn254) fused with the C-terminal His tag was expressed in Mammalian cells.
Species	Human
Source	Mammalian Cells
ProteinLength	Met1-Asn254
Form	Lyophilized powder/frozen liquid
Molecular Mass	27.94 kDa
Endotoxin	< 1.0 EU/μg of the protein as determined by the LAL method.
Purity	>90% as determined by SDS-PAGE.
Notes	For research use only.
Storage	Use a manual defrost freezer and avoid repeated freeze thaw cycles. Store at 2 to 8 centigrade for one week. Store at -20 to -80 centigrade for twelve months from the date of receipt.
Storage Buffer	Supplied as solution form in PBS, pH 7.5 or lyophilized from PBS, pH 7.5.

 Tel: 1-631-559-9269 1-516-512-3133

 Email: info@creative-biomart.com  Fax: 1-631-938-8127

 45-1 Ramsey Road, Shirley, NY 11967, USA

Reconstitution Reconstitute in sterile water for a stock solution.

Shipping They are shipped out with dry ice/blue ice unless customers require otherwise.

GENE INFORMATION

Gene Name [IL2RG interleukin 2 receptor, gamma \[Homo sapiens \(human\) \]](#)

Official Symbol [IL2RG](#)

Synonyms

IL2RG; interleukin 2 receptor, gamma; CIDX, combined immunodeficiency, X linked, IMD4, SCIDX1, severe combined immunodeficiency; cytokine receptor common subunit gamma; CD132; gammaC; gamma (c); CD132 antigen; common gamma-chain; IL-2R subunit gamma; IL-2 receptor subunit gamma; severe combined immunodeficiency; combined immunodeficiency, X-linked; common cytokine receptor gamma chain; interleukin-2 receptor subunit gamma; P64; CIDX; IMD4; SCIDX; IL-2RG; SCIDX1;

Gene ID [3561](#)

mRNA Refseq [NM_000206](#)

Protein Refseq [NP_000197](#)

MIM [308380](#)

UniProt ID [P31785](#)

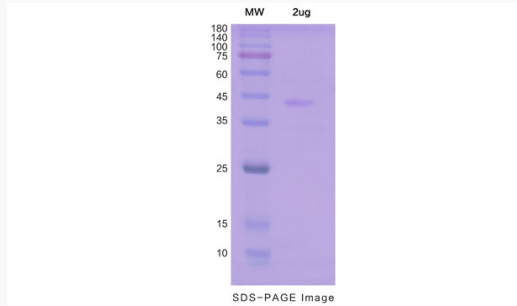
 Tel: 1-631-559-9269 1-516-512-3133

 Email: info@creative-biomart.com  Fax: 1-631-938-8127

 45-1 Ramsey Road, Shirley, NY 11967, USA



SDS-PAGE



Tel: 1-631-559-9269 1-516-512-3133

Email: info@creative-biomart.com Fax: 1-631-938-8127

45-1 Ramsey Road, Shirley, NY 11967, USA