

Active Recombinant Human IL2RG protein, His-tagged

Cat. No. IL2RG-6963H Lot. No. (See product label)

SPECIFICATION

Product Overview	Active Recombinant Human IL2RG protein(P31785)(Met 1-Asn 254) was expressed in Insect Cells, fused with a polyhistidine tag at the C-terminus.
Species	Human
Source	Insect Cells
ProteinLength	1-254 aa
Form	Lyophilized from sterile 20mM Tris, 500mM NaCl, pH 7.4, 10% gly.
Bio-activity	Measured by its ability to bind biotinylated recombinant rat IL2 in a functional ELISA.
Molecular Mass	The recombinant human IL2RG consists of 242 amino acids and predicts a molecular mass of 28.8 kDa. The apparent molecular mass of rhIL2RG is approximately 43 kDa in SDS-PAGE under reducing conditions.
Endotoxin	< 1.0 EU per µg protein as determined by the LAL method.
Purity	> 97 % as determined by SDS-PAGE
Storage	Store it under sterile conditions at -20°C to -80°C upon receiving. Recommend to aliquot the protein into smaller quantities for optimal storage. Avoid repeated freeze-thaw cycles.

 Tel: 1-631-559-9269 1-516-512-3133

 Email: info@creative-biomart.com  Fax: 1-631-938-8127

 45-1 Ramsey Road, Shirley, NY 11967, USA

Reconstitution It is recommended that sterile water be added to the vial to prepare a stock solution of 0.2 ug/ul. Centrifuge the vial at 4°C before opening to recover the entire contents.

GENE INFORMATION

Gene Name IL2RG interleukin 2 receptor, gamma [Homo sapiens]

Official Symbol IL2RG

Synonyms IL2RG; interleukin 2 receptor, gamma; CIDX, combined immunodeficiency, X linked , IMD4, SCIDX1, severe combined immunodeficiency; cytokine receptor common subunit gamma; CD132; gammaC; gamma(c); CD132 antigen; common gamma-chain; IL-2R subunit gamma; IL-2 receptor subunit gamma; severe combined immunodeficiency; combined immunodeficiency, X-linked; common cytokine receptor gamma chain; interleukin-2 receptor subunit gamma; P64; CIDX; IMD4; SCIDX; IL-2RG; SCIDX1;

Gene ID 3561

mRNA Refseq NM_000206

Protein Refseq NP_000197

MIM 308380

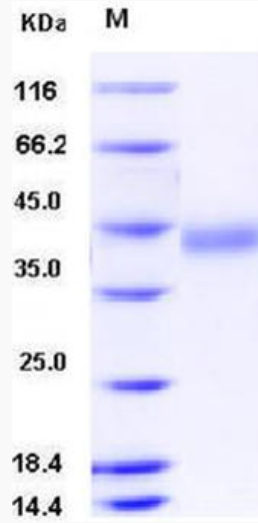
UniProt ID P31785

 Tel: 1-631-559-9269 1-516-512-3133

 Email: info@creative-biomart.com  Fax: 1-631-938-8127

 45-1 Ramsey Road, Shirley, NY 11967, USA

SDS-PAGE



 Tel: 1-631-559-9269 1-516-512-3133

 Email: info@creative-biomart.com  Fax: 1-631-938-8127

 45-1 Ramsey Road, Shirley, NY 11967, USA