

Recombinant Human IL2RG protein, Fc-tagged

Cat. No. IL2RG-7289H Lot. No. (See product label)

SPECIFICATION

Product Overview	Recombinant Human IL2RG protein(P31785) (Met1-Asn254) was expressed in HEK293, fused with the Fc region of human IgG1 at the C-terminus.
Species	Human
Source	HEK293
ProteinLength	1-254 aa
Form	Lyophilized from sterile PBS, pH 7.4.
Molecular Mass	The recombinant human IL2RG/Fc is a disulfide-linked homodimer. The reduced monomer comprises 473 amino acids and has a predicted molecular mass of 54.4 kDa. The apparent molecular mass of the protein is approximately 71 kDa in SDS-PAGE under reducing conditions.
Endotoxin	< 1.0 EU per µg protein as determined by the LAL method.
Purity	> 99 % as determined by SDS-PAGE
Storage	Store it under sterile conditions at -20°C to -80°C upon receiving. Recommend to aliquot the protein into smaller quantities for optimal storage. Avoid repeated freeze-thaw cycles.
Reconstitution	It is recommended that sterile water be added to the vial to prepare a stock solution of

 Tel: 1-631-559-9269 1-516-512-3133

 Email: info@creative-biomart.com  Fax: 1-631-938-8127

 45-1 Ramsey Road, Shirley, NY 11967, USA

0.2 ug/ul. Centrifuge the vial at 4°C before opening to recover the entire contents.

GENE INFORMATION

Gene Name [IL2RG interleukin 2 receptor, gamma \[Homo sapiens \]](#)

Official Symbol [IL2RG](#)

Synonyms

IL2RG; interleukin 2 receptor, gamma; CIDX, combined immunodeficiency, X linked , IMD4, SCIDX1, severe combined immunodeficiency; cytokine receptor common subunit gamma; CD132; gammaC; gamma(c); CD132 antigen; common gamma-chain; IL-2R subunit gamma; IL-2 receptor subunit gamma; severe combined immunodeficiency; combined immunodeficiency, X-linked; common cytokine receptor gamma chain; interleukin-2 receptor subunit gamma; P64; CIDX; IMD4; SCIDX; IL-2RG; SCIDX1;

Gene ID [3561](#)

mRNA Refseq [NM_000206](#)

Protein Refseq [NP_000197](#)

MIM [308380](#)

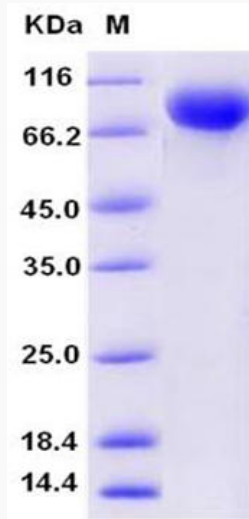
UniProt ID [P31785](#)

 Tel: 1-631-559-9269 1-516-512-3133

 Email: info@creative-biomart.com  Fax: 1-631-938-8127

 45-1 Ramsey Road, Shirley, NY 11967, USA

SDS-PAGE



 Tel: 1-631-559-9269 1-516-512-3133

 Email: info@creative-biomart.com  Fax: 1-631-938-8127

 45-1 Ramsey Road, Shirley, NY 11967, USA